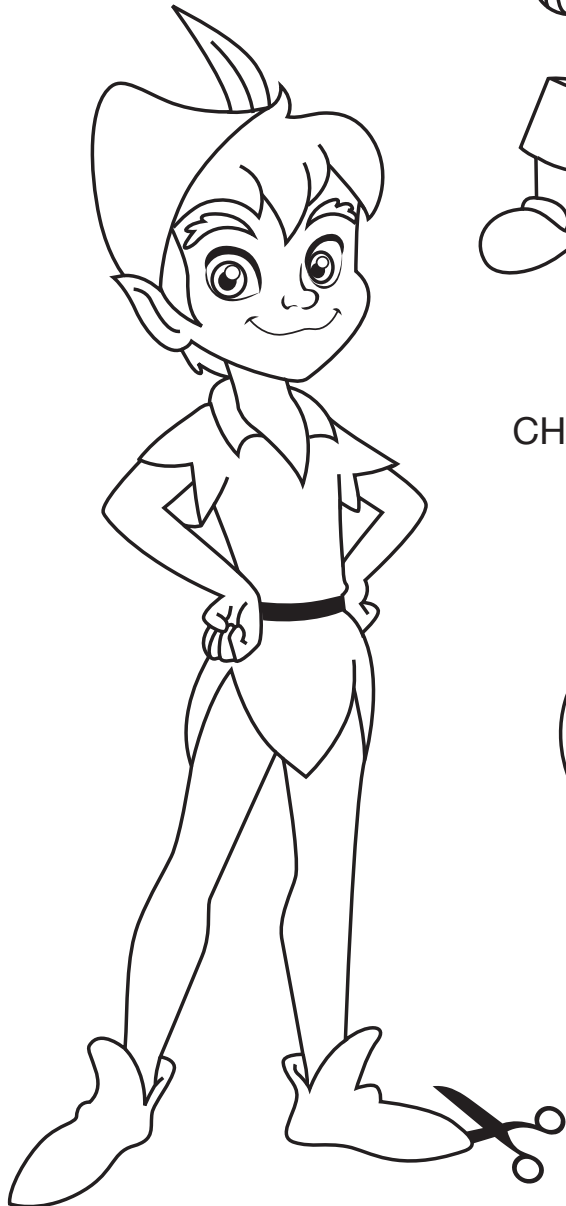




SHADOW PUPPET THEATER

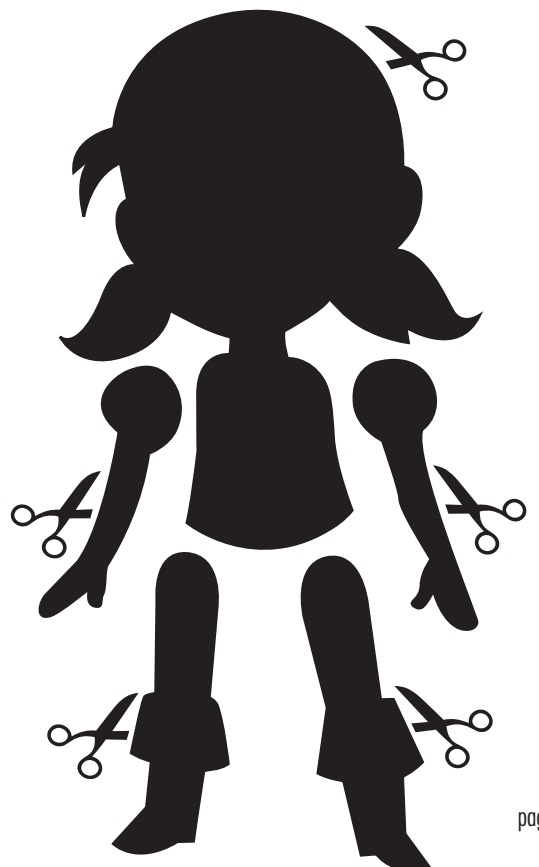
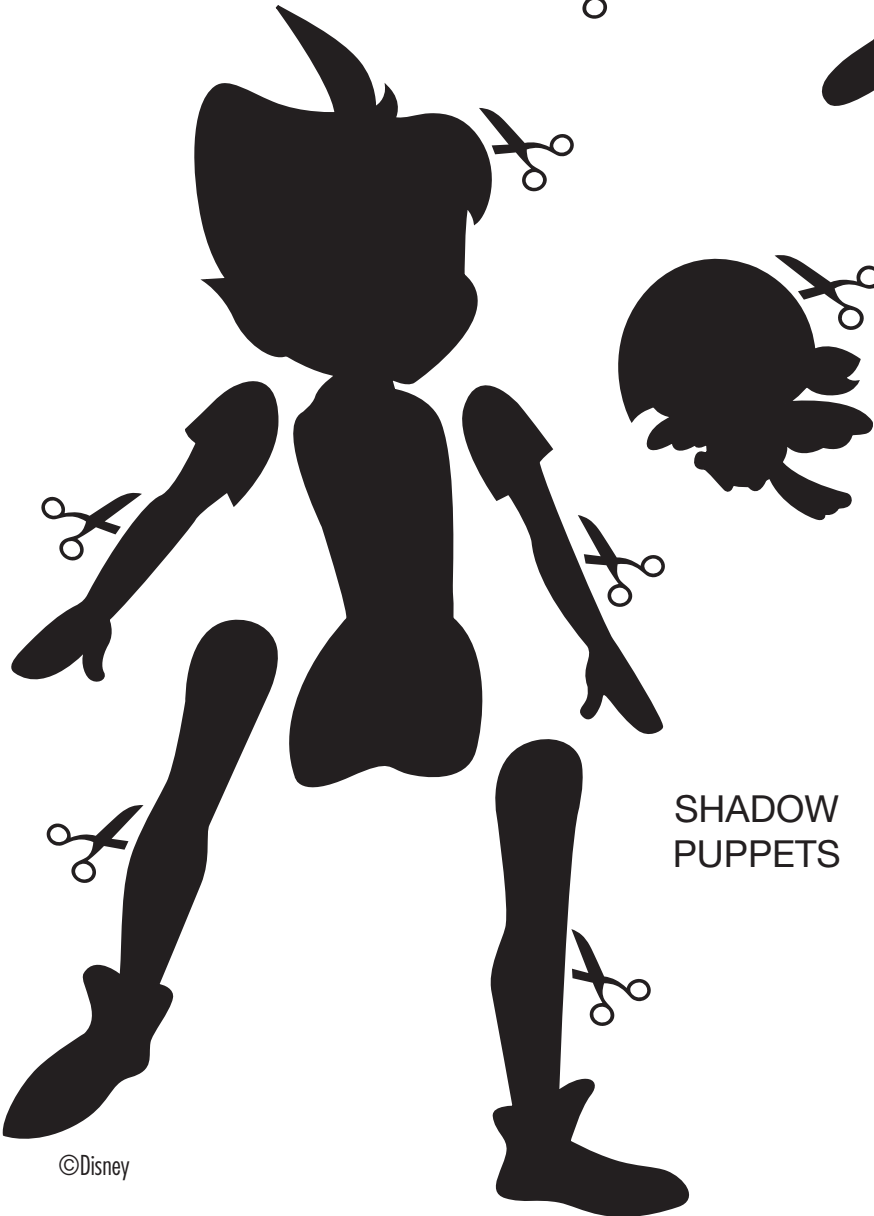
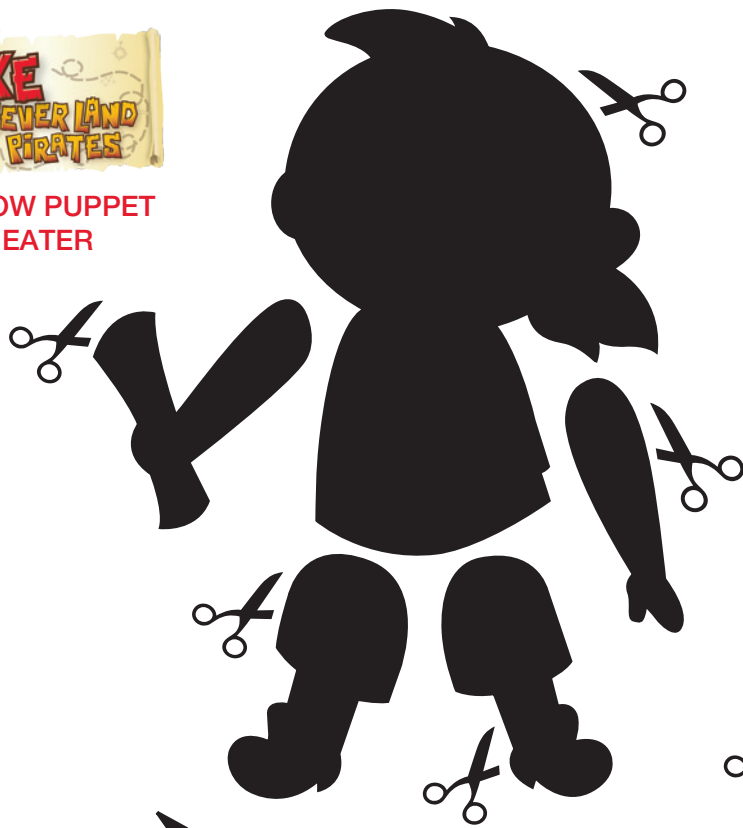


CHARACTER PUPPETS





SHADOW PUPPET THEATER



SHADOW PUPPETS





Instructions

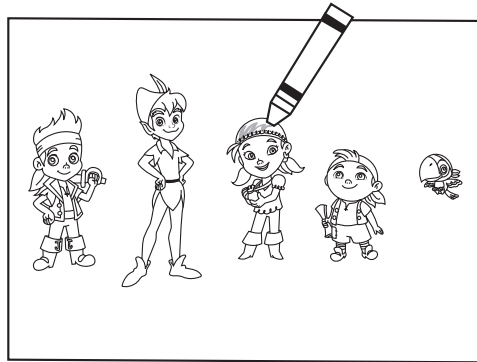
Cutting and scoring intended for grown-ups only.

SHADOW PUPPET THEATER

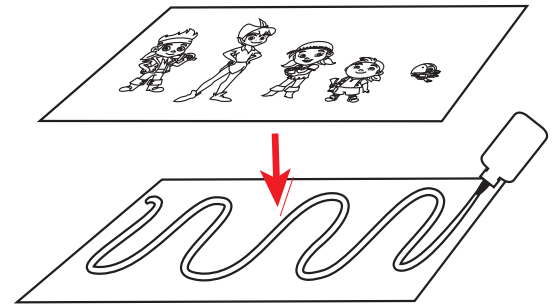
MATERIALS:

- Large cereal box
- Blue Acrylic Paint
- Tissue Paper
- White cardstock (60 lb.)
- Craft sticks
- Glue
- Dimensional foam tape
- Mini brads
- Ruler
- Scissors
- Chalk or chalk pencil
- Pen

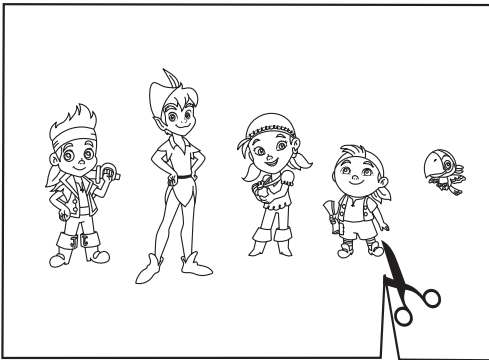
1. Print out and color the characters on ordinary copy paper.



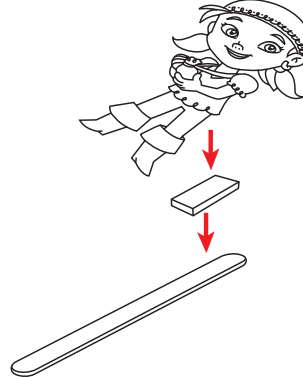
2. Glue the copy paper to a sheet of white cardstock.



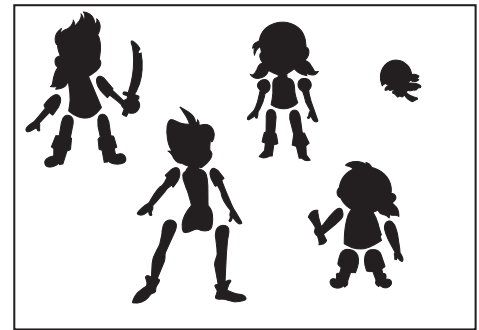
3. Cut out the characters (grown-ups only).



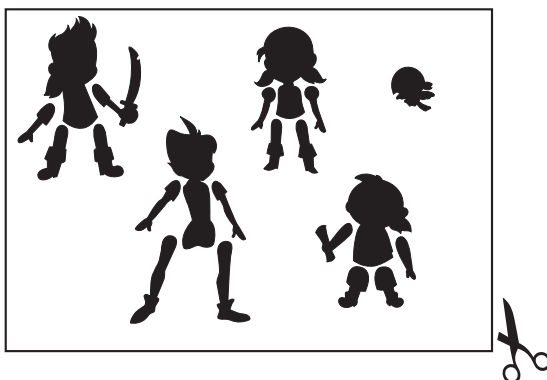
4. Attach each colored character to a craft stick using dimensional foam tape.



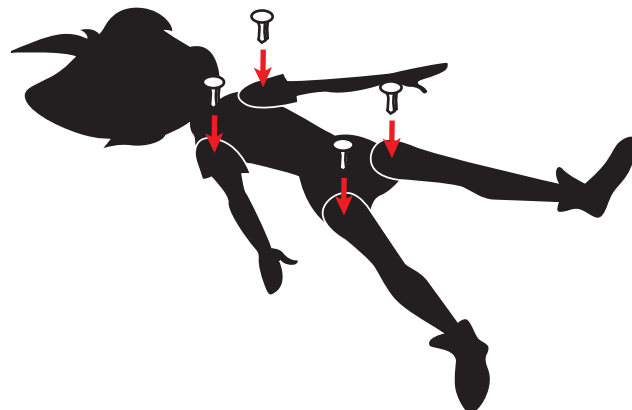
5. Print out the shadow puppets page on copy paper.



6. Cut out each of the characters and limbs.



7. Attach the arms and legs of each character above their respective joints using mini brads. Do the same for all the characters.





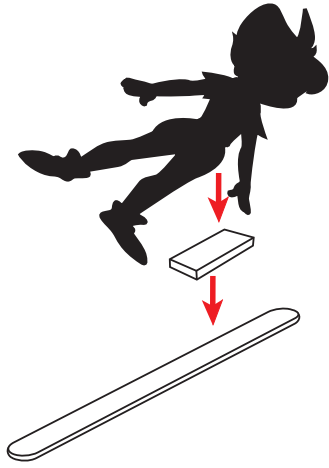
SHADOW PUPPET THEATER



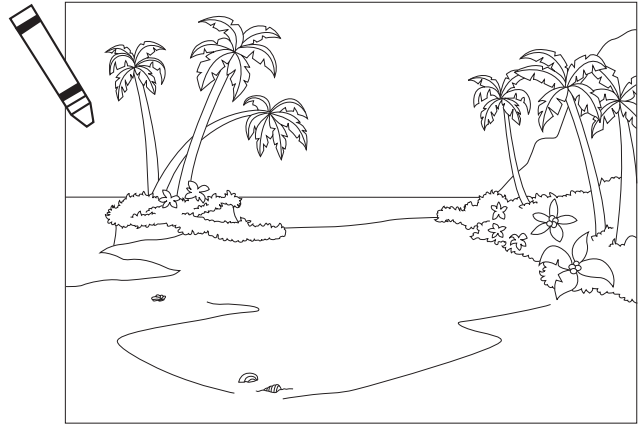
Instructions

Cutting and scoring intended for grown-ups only.

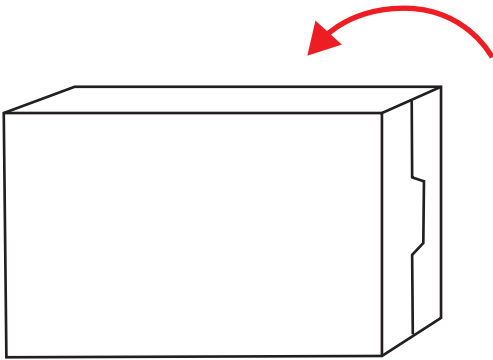
8. Attach each shadow puppet to a craft stick using dimensional foam tape to form the “shadows”.



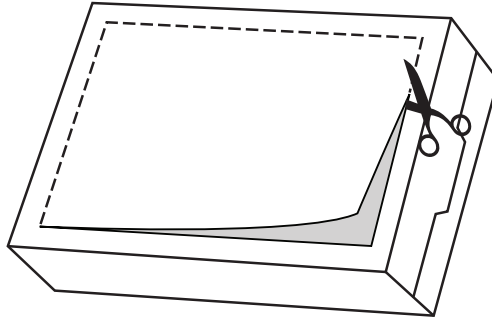
9. Print out and color the background, then set aside.



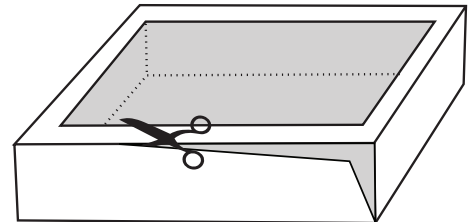
10. Take a large cereal box and set it on its side lengthwise.



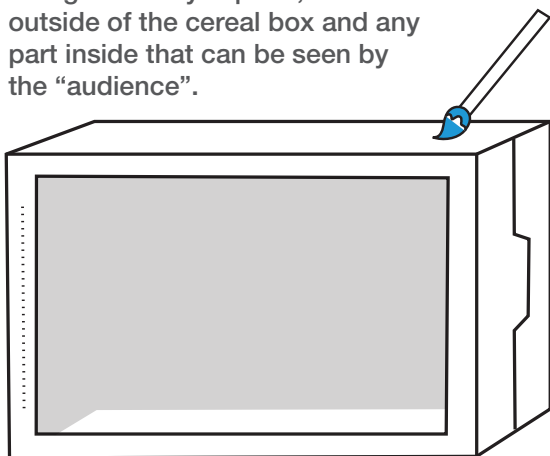
11. Cut out the front center panel leaving approx. a 1-inch margin on all sides. This will be the front of the theater. Save the panel piece for later.



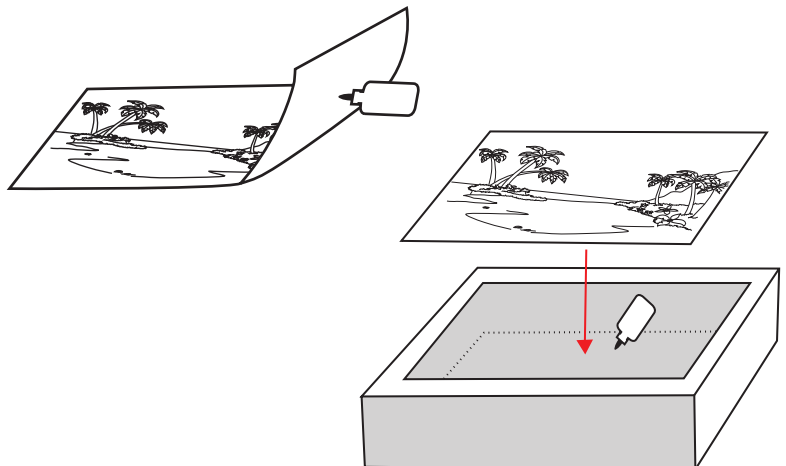
12. Cut out an opening along the length of the bottom side of the box.



13. Using blue acrylic paint, color the outside of the cereal box and any part inside that can be seen by the “audience”.



14. Glue the colored background to the inside of the box.



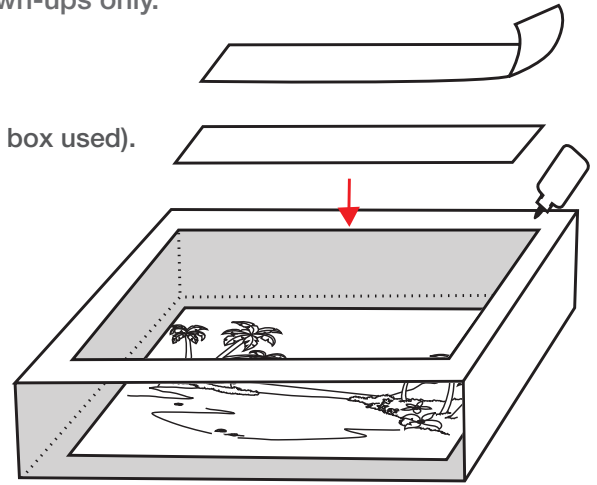


Instructions

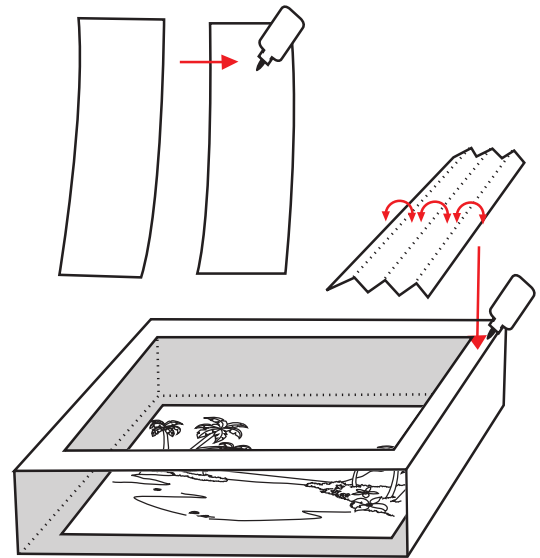
Cutting and scoring intended for grown-ups only.

SHADOW PUPPET THEATER

15. To create a valance, cut a 2-layer strip of tissue paper and glue to the top front of the theater.
(1 1/2 inches by 13 inches will work but will depend on the cereal box used).



16. To create theater curtains, glue two strips of tissue paper together approx. 3 inches wide by 7 1/2 inches long (or size to fit). Accordion fold the strip lengthwise, then glue to the front right side of your theater. Do the same for the left side.



17. Using the front panel piece you set aside earlier, cut it in half lengthwise. Glue each piece to the bottom front of the theater. This will help balance the theater when set at the end of a table top when youngsters are performing their shadow puppet plays. Yo ho, let's go!

