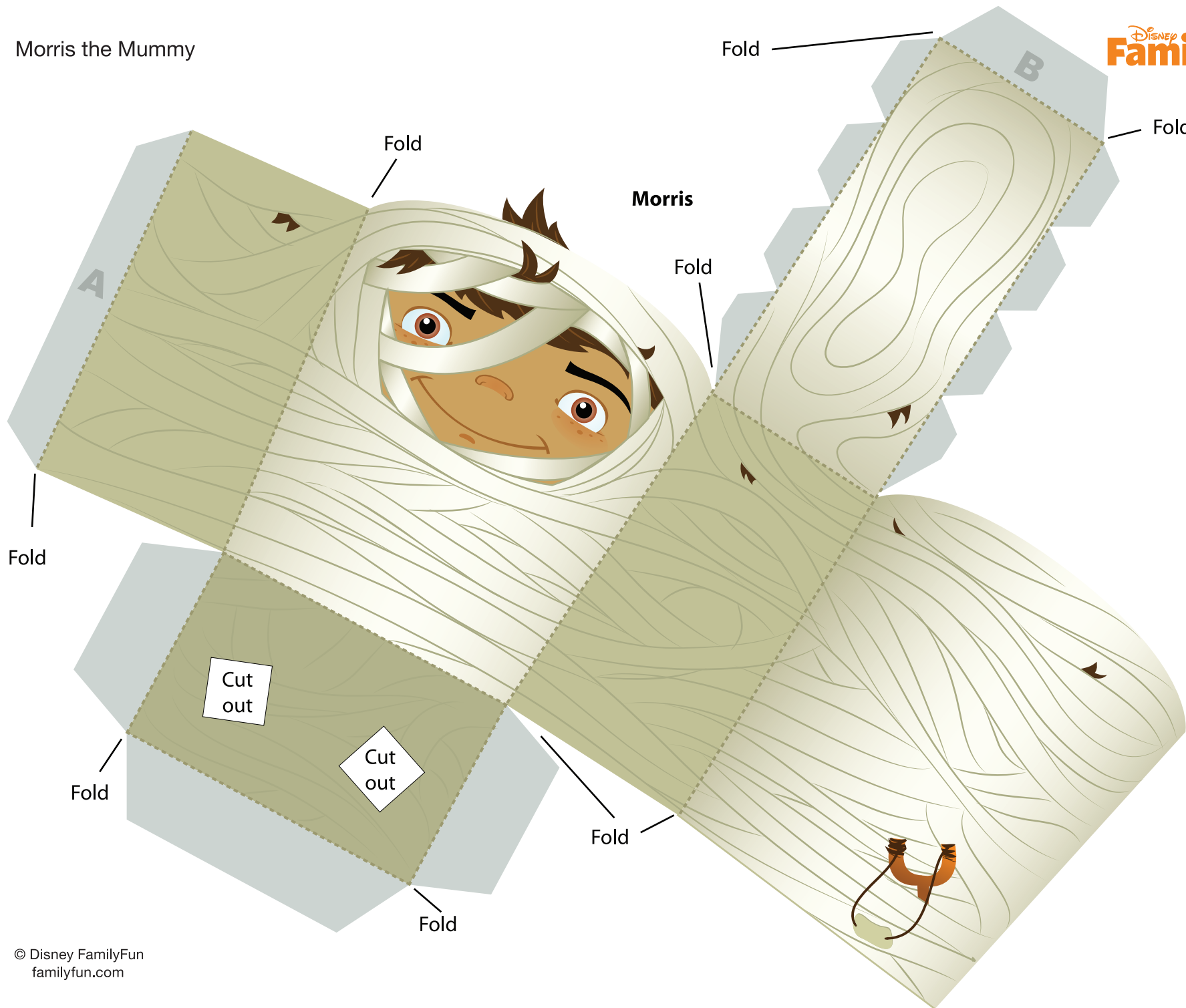
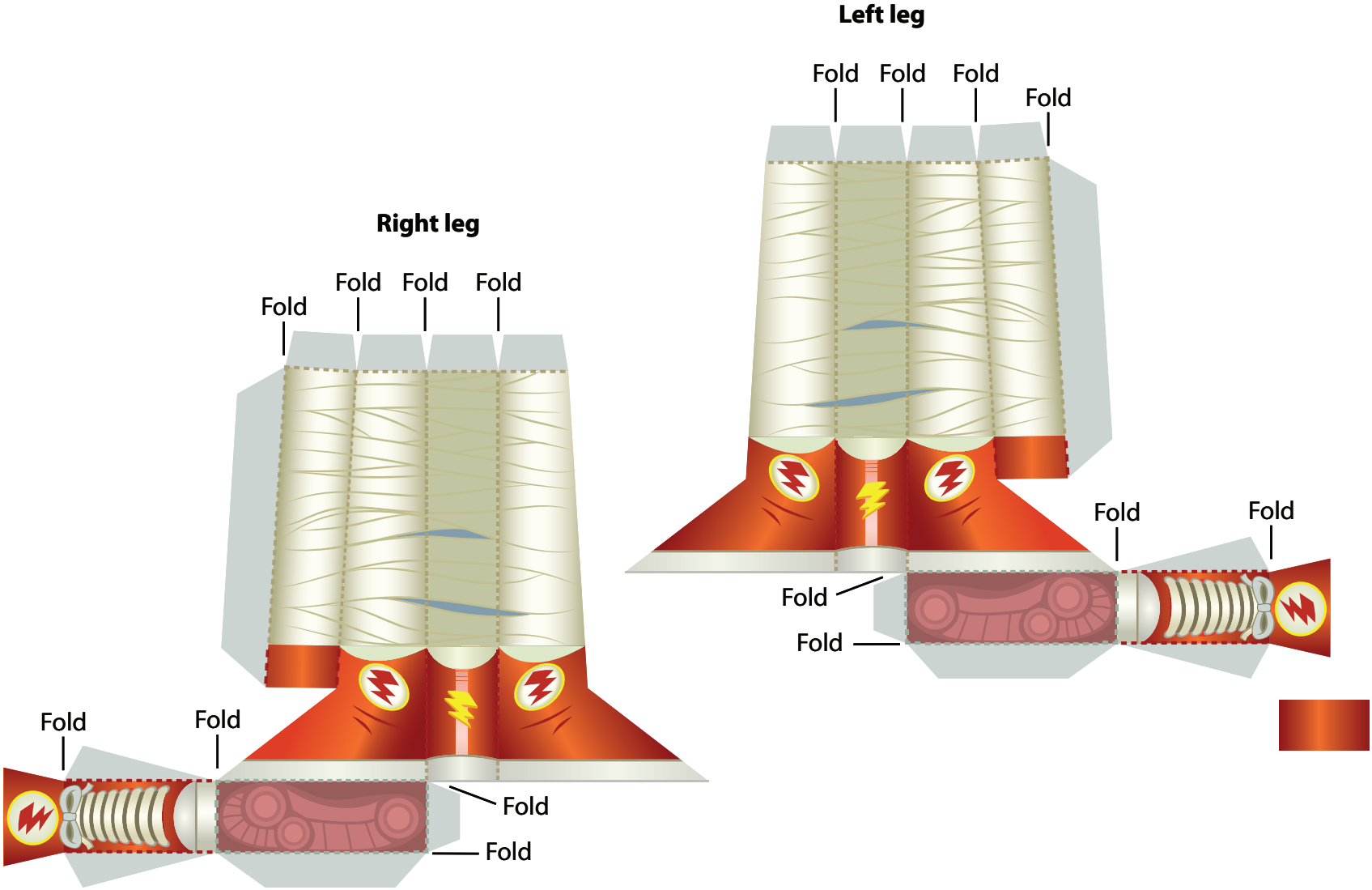
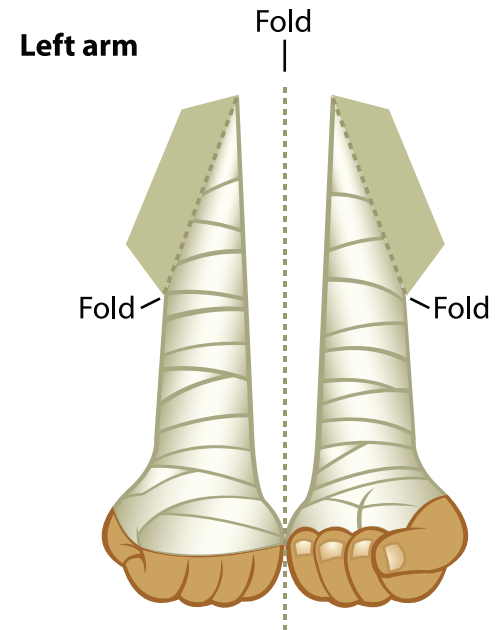
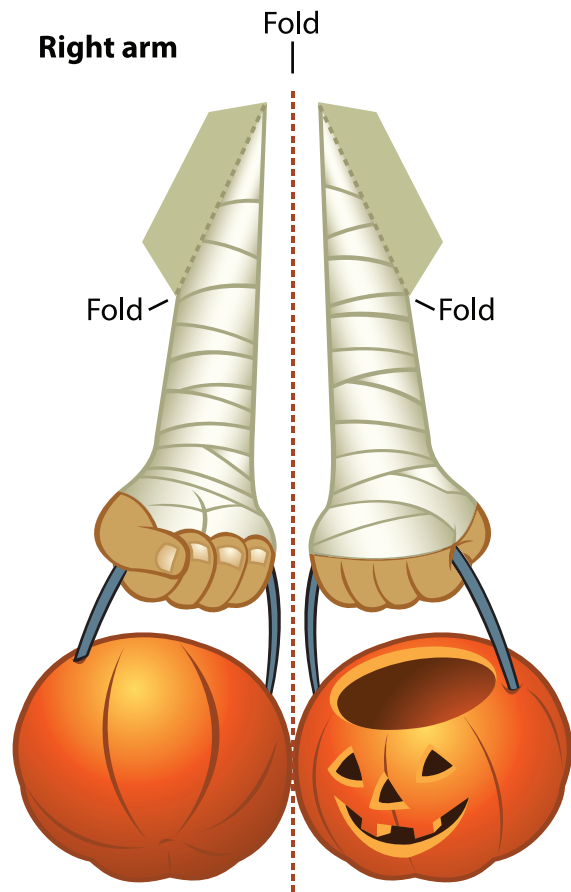


# Morris the Mummy







1. Cut out the Mummy Character and its pieces. On the main character piece, make folds (away from you) along the dotted lines, including the tabs. Glue the tabs on the bottom piece first. Glue tab A to the back side of the Mummy's back. The character should be taking shape.
2. Put glue on the eight small tabs (four per side) that are located on the sides of the top of the Mummy's head. Then glue them to the back side of the Mummy's head. Make sure you hold each one in place for a few seconds before you move on. Next, glue tab B to the back of the side of the Mummy's head.
3. Cut out the arms. Keep them connected in the middle and fold it in half. Bend the tabs toward you, and then glue the back sides of the arm (leaving glue off the tabs) together. Be sure to not glue the tabs to each other. Once the arms are dry, put glue on the open tabs and glue the arms to each side of the Mummy.
4. For the legs, make all of the folds (except for the four tabs at the top of the leg) away from you. The four tabs at the top of the leg should be folded towards you. Start by gluing the tabs at the bottom of the shoe first, then work your way up to the long tab. Glue the four small tabs at the top of the leg to the bottom of the Mummy. You Mummy is now complete!