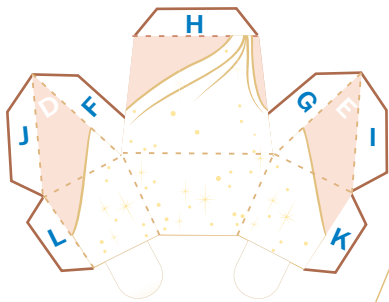


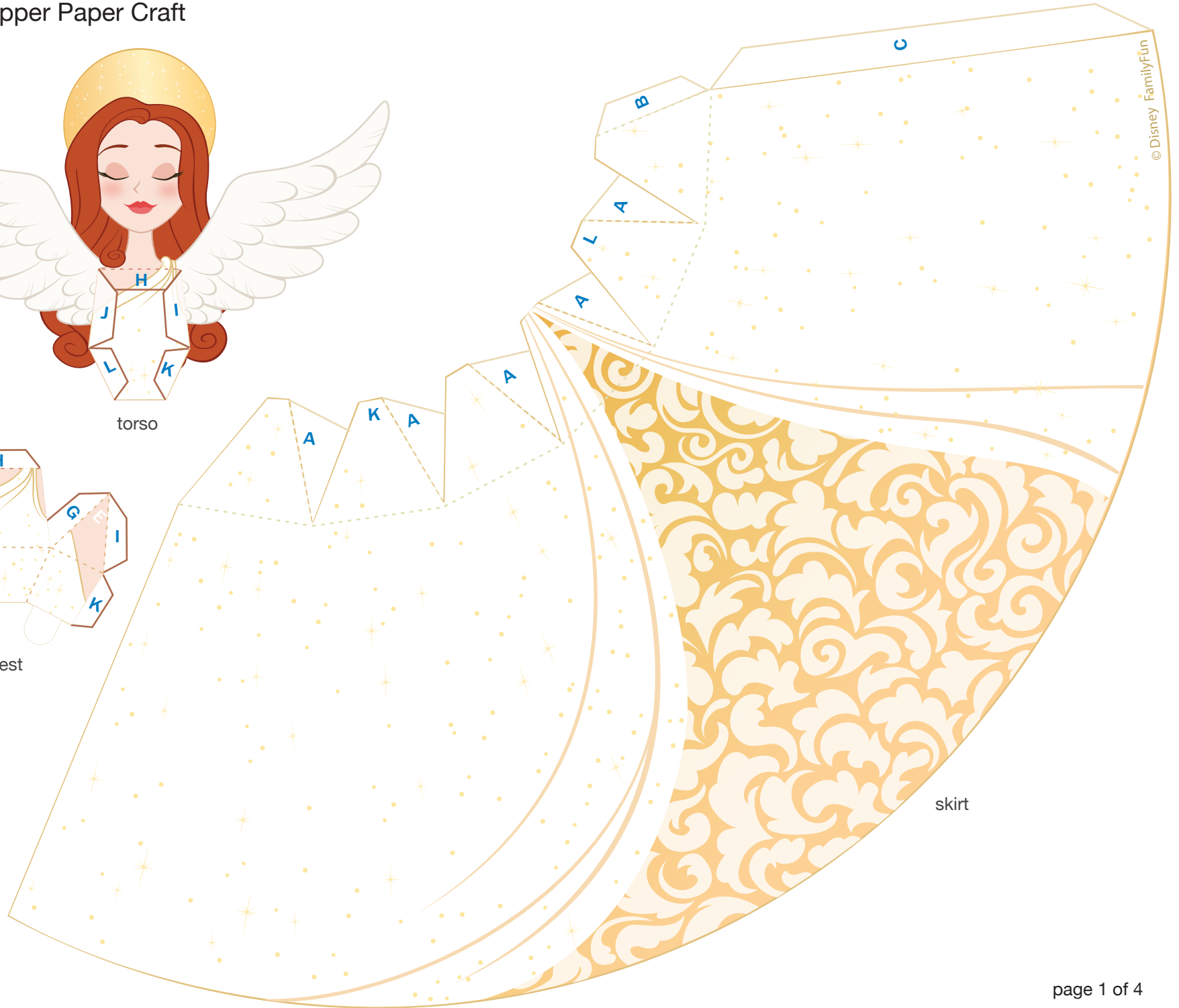
Angel Tree Topper Paper Craft



torso



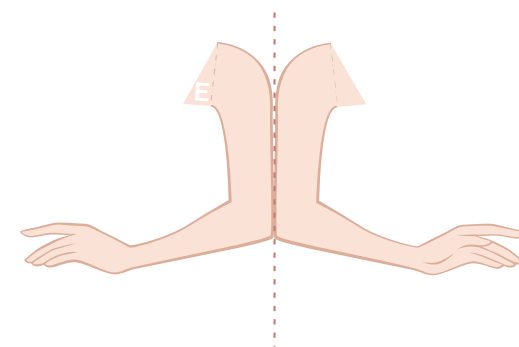
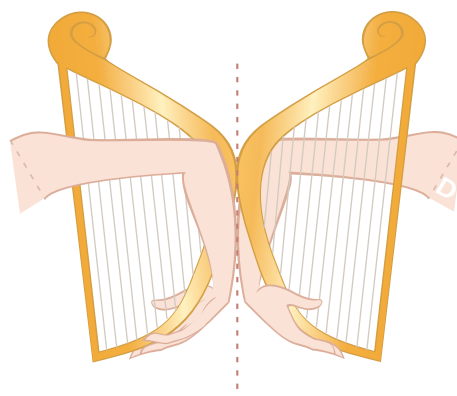
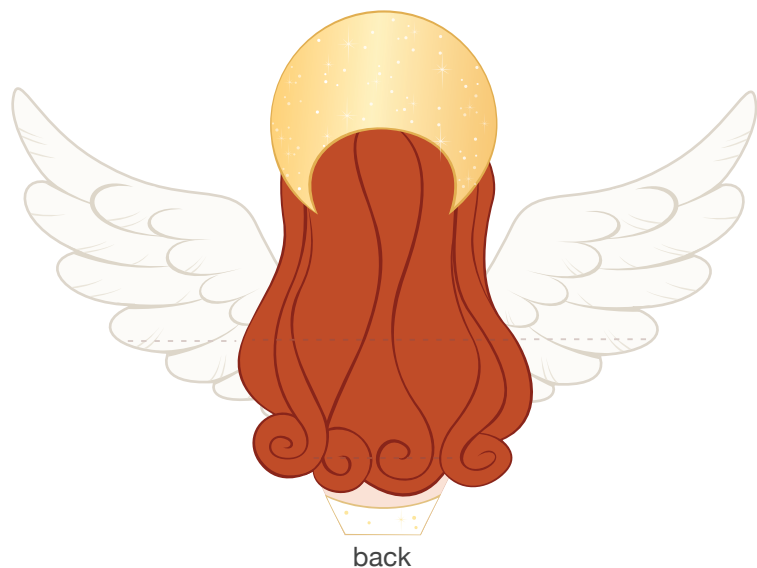
chest



skirt

© Disney FamilyFun

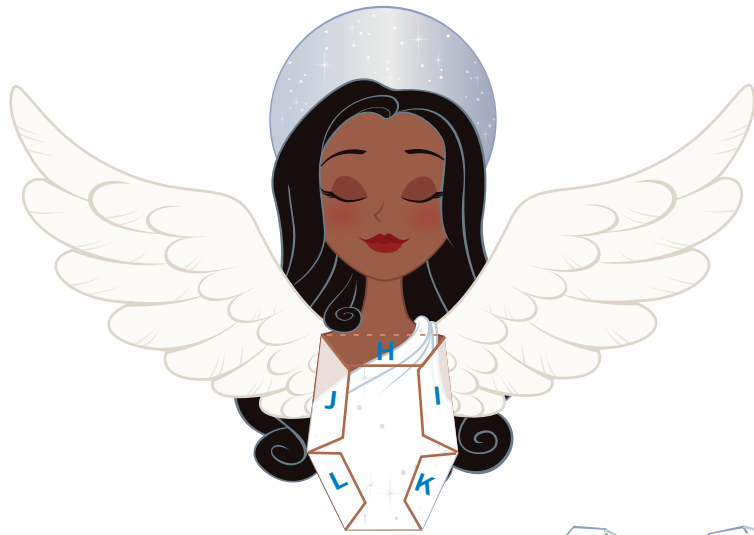
Angel Tree Topper Paper Craft



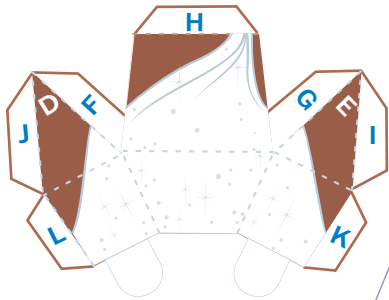
1. Print out your angel on regular paper or cardstock. Cut out each piece with a craft knife or scissors. Do not cut along the dashed lines -- this is where you will fold the paper.
2. Line up the angel's back with her torso and glue them together so that the design is now two-sided. After the glue has dried, fold the bottom part of the angel's torso towards you along the tan dashed line. Then, fold the angel's face away from you along the dashed line across her shoulders.
3. Take the angel's chest piece and fold along each dashed line. Make each fold away from you. Glue the G tab and F tab to the back, white side of the angel's chest.
4. Spread glue on the H tab of the angel's chest and press it into place on the H area on the angel's torso. Make sure her shoulders are lined up correctly.
5. After the glue dries, add glue to the I, J, K, and L tabs and press them into place. Hold the pieces together until the glue dries. You may need to use a pen or pencil inside her chest area to position the tabs just right.

6. Fold each of the angel's arms and glue them so that the design is two-sided. Make sure they are lined up before the glue dries. Attach the arms to each side of the angel's body under each shoulder by gluing the E tab to the E area and D tab to the D area.
7. Cut slits in the top of the skirt opposite of where you fold each A tab. Fold each of the dashed lines at the top of the skirt and each A tab away from you. Starting from left to right with the illustrated side of the skirt facing you, glue each A tab to the back of the skirt piece next to it to create pleats.
8. When you are finished gluing the A tabs you may find it easier to glue the C tab to the inside of the skirt before gluing the final B tab pleat.
9. Finally, attach the angel's completed torso to her skirt by gluing the under side of the tabs at her waist to the top of the skirt over the areas labeled K and L.

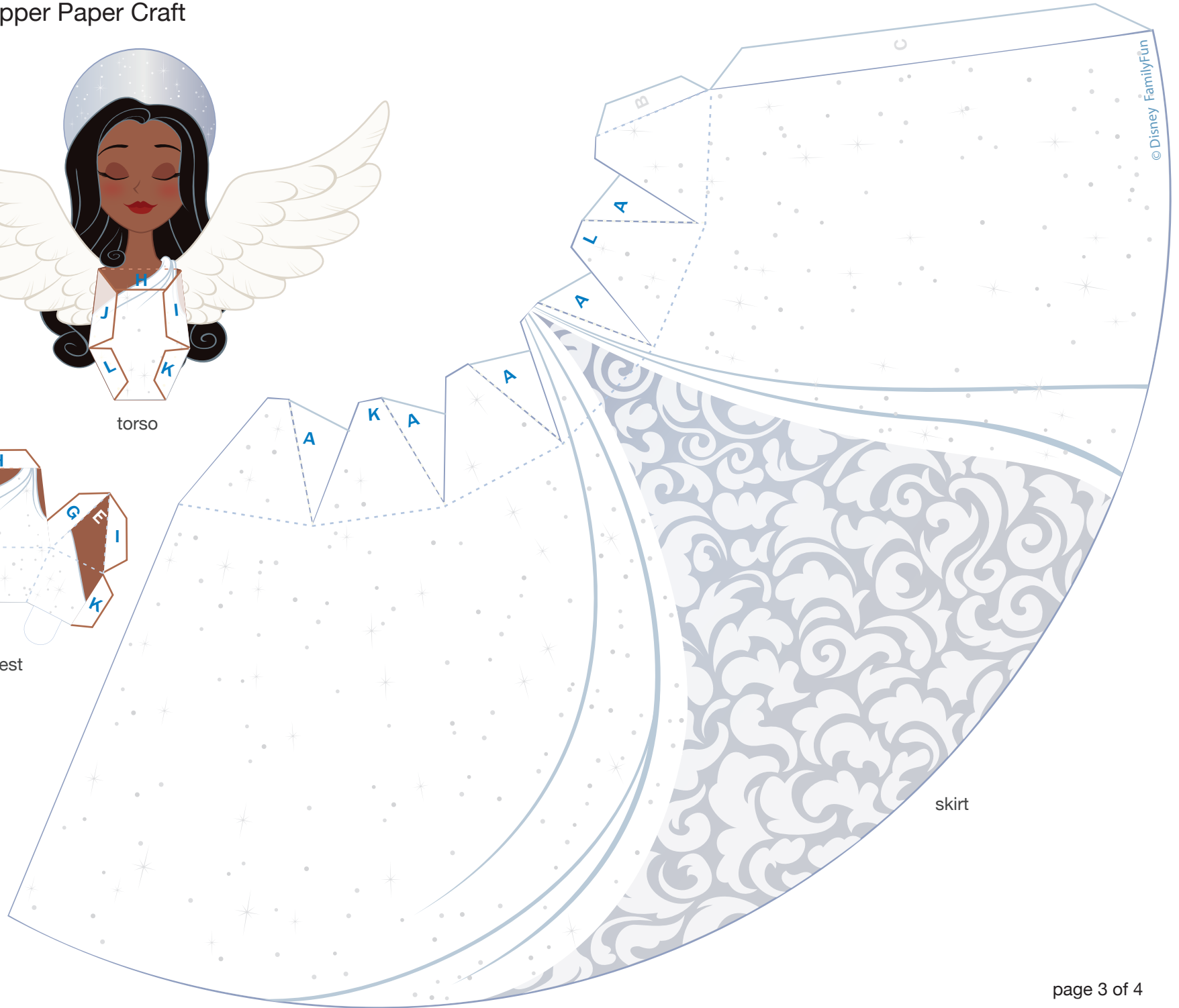
Angel Tree Topper Paper Craft



torso



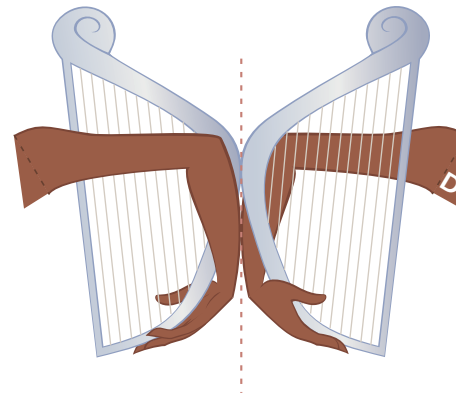
chest



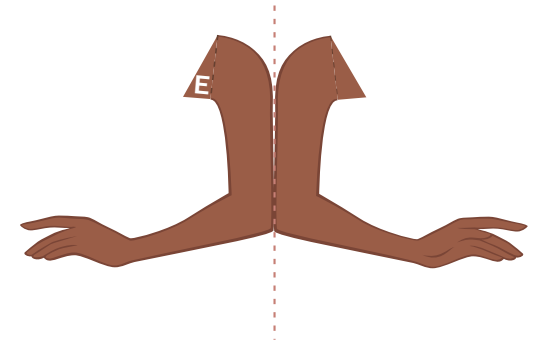
skirt

© Disney FamilyFun

Angel Tree Topper Paper Craft



left arm



right arm

1. Print out your angel on regular paper or cardstock. Cut out each piece with a craft knife or scissors. Do not cut along the dashed lines -- this is where you will fold the paper.
2. Line up the angel's back with her torso and glue them together so that the design is now two-sided. After the glue has dried, fold the bottom part of the angel's torso towards you along the tan dashed line. Then, fold the angel's face away from you along the dashed line across her shoulders.
3. Take the angel's chest piece and fold along each dashed line. Make each fold away from you. Glue the G tab and F tab to the back, white side of the angel's chest.
4. Spread glue on the H tab of the angel's chest and press it into place on the H area on the angel's torso. Make sure her shoulders are lined up correctly.
5. After the glue dries, add glue to the I, J, K, and L tabs and press them into place. Hold the pieces together until the glue dries. You may need to use a pen or pencil inside her chest area to position the tabs just right.

6. Fold each of the angel's arms and glue them so that the design is two-sided. Make sure they are lined up before the glue dries. Attach the arms to each side of the angel's body under each shoulder by gluing the E tab to the E area and D tab to the D area.
7. Cut slits in the top of the skirt opposite of where you fold each A tab. Fold each of the dashed lines at the top of the skirt and each A tab away from you. Starting from left to right with the illustrated side of the skirt facing you, glue each A tab to the back of the skirt piece next to it to create pleats.
8. When you are finished gluing the A tabs you may find it easier to glue the C tab to the inside of the skirt before gluing the final B tab pleat.
9. Finally, attach the angel's completed torso to her skirt by gluing the under side of the tabs at her waist to the top of the skirt over the areas labeled K and L.