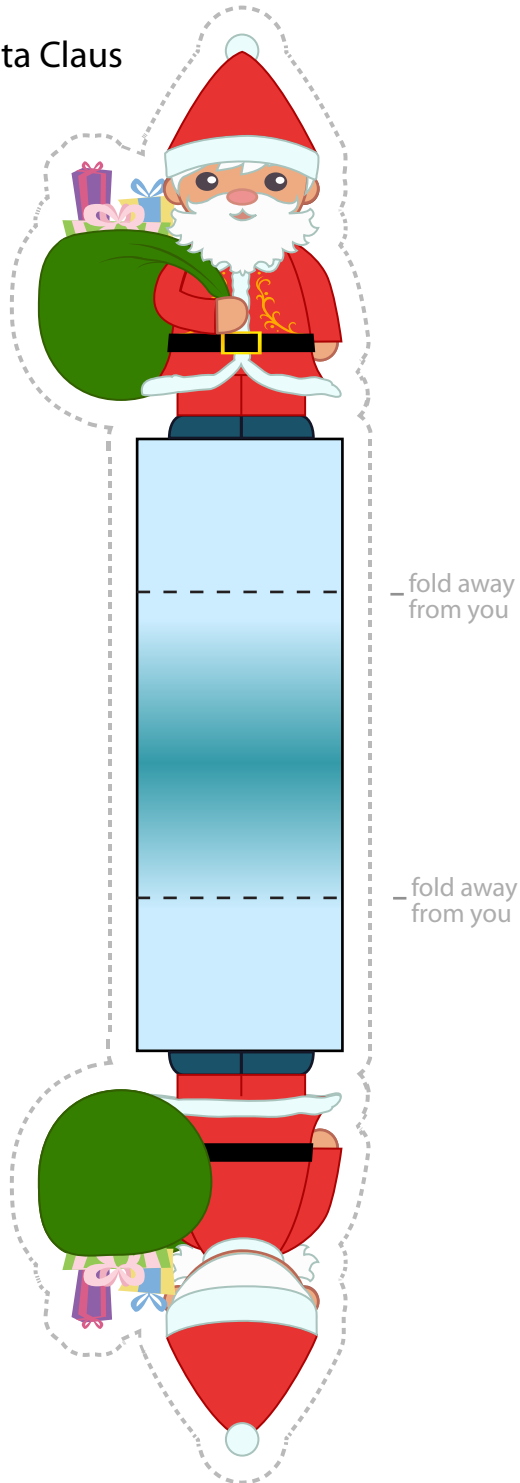
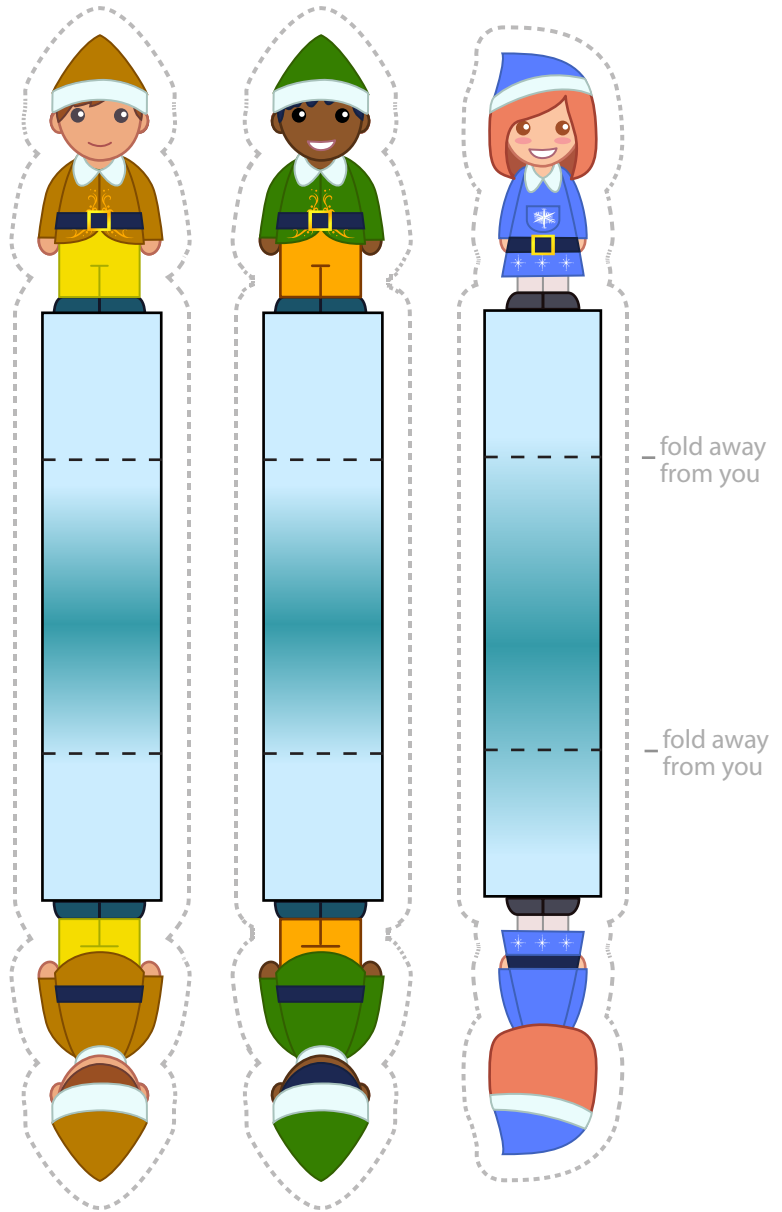


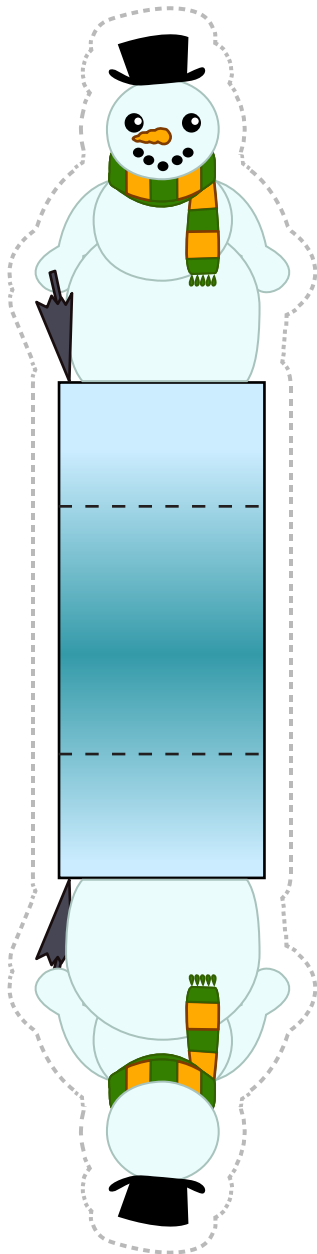
Santa Claus



Santa's Elves



Snowman



— fold away from you

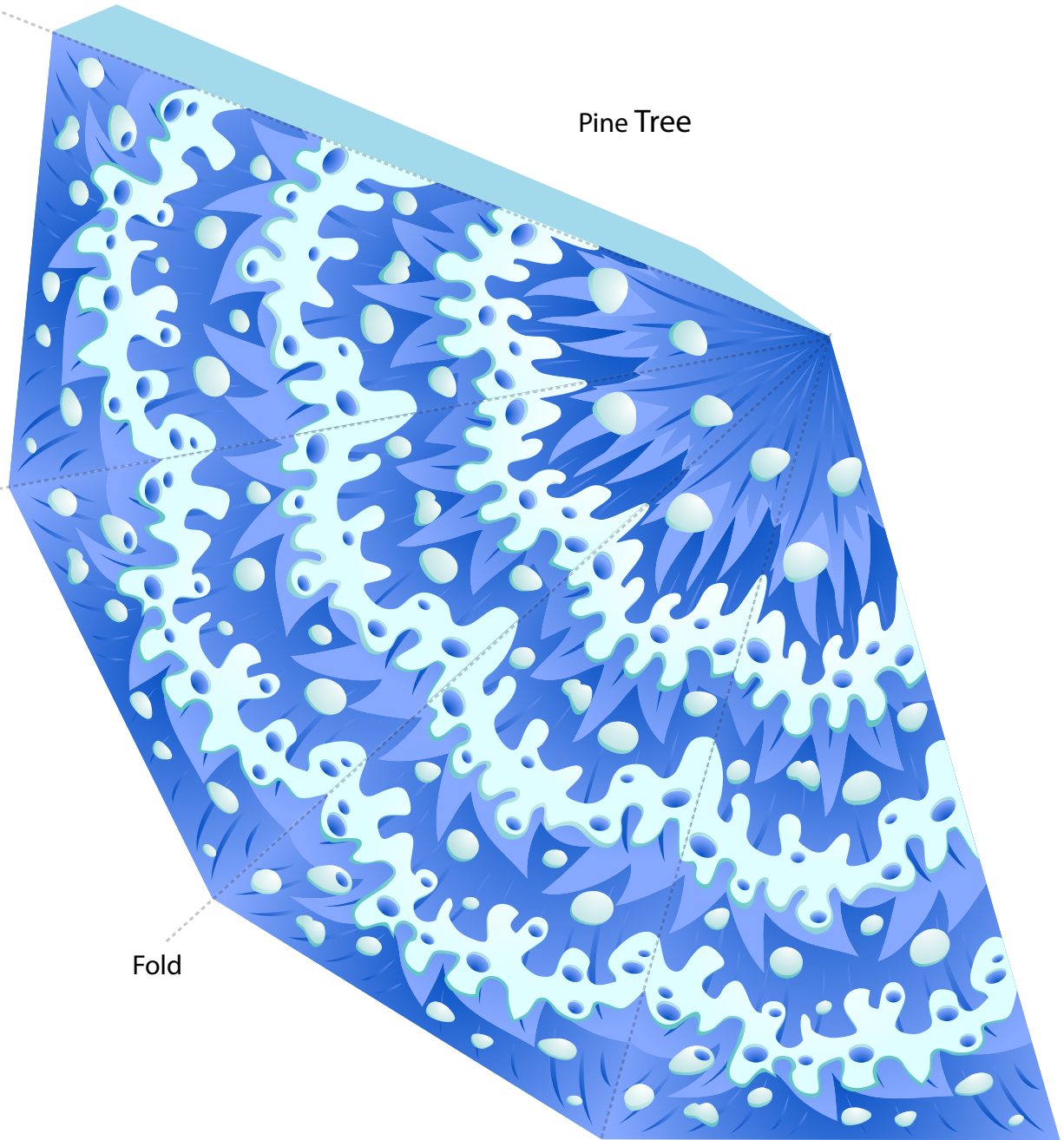
— fold away from you

Fold

Fold

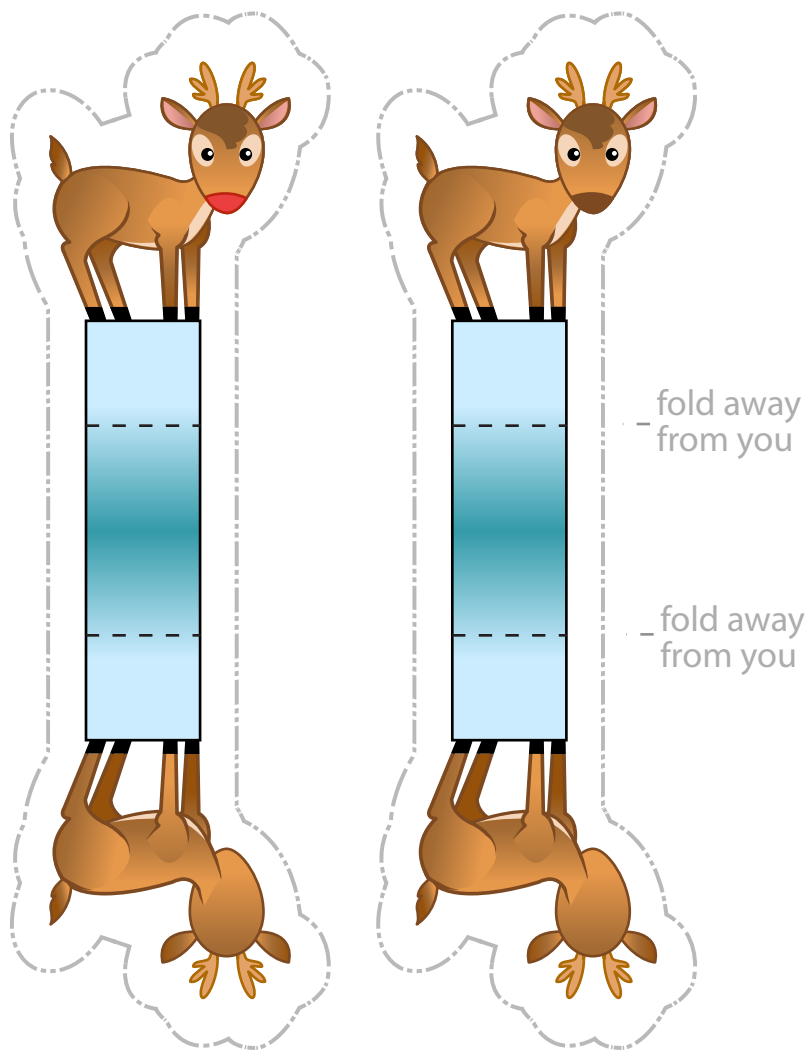
Fold

Pine Tree

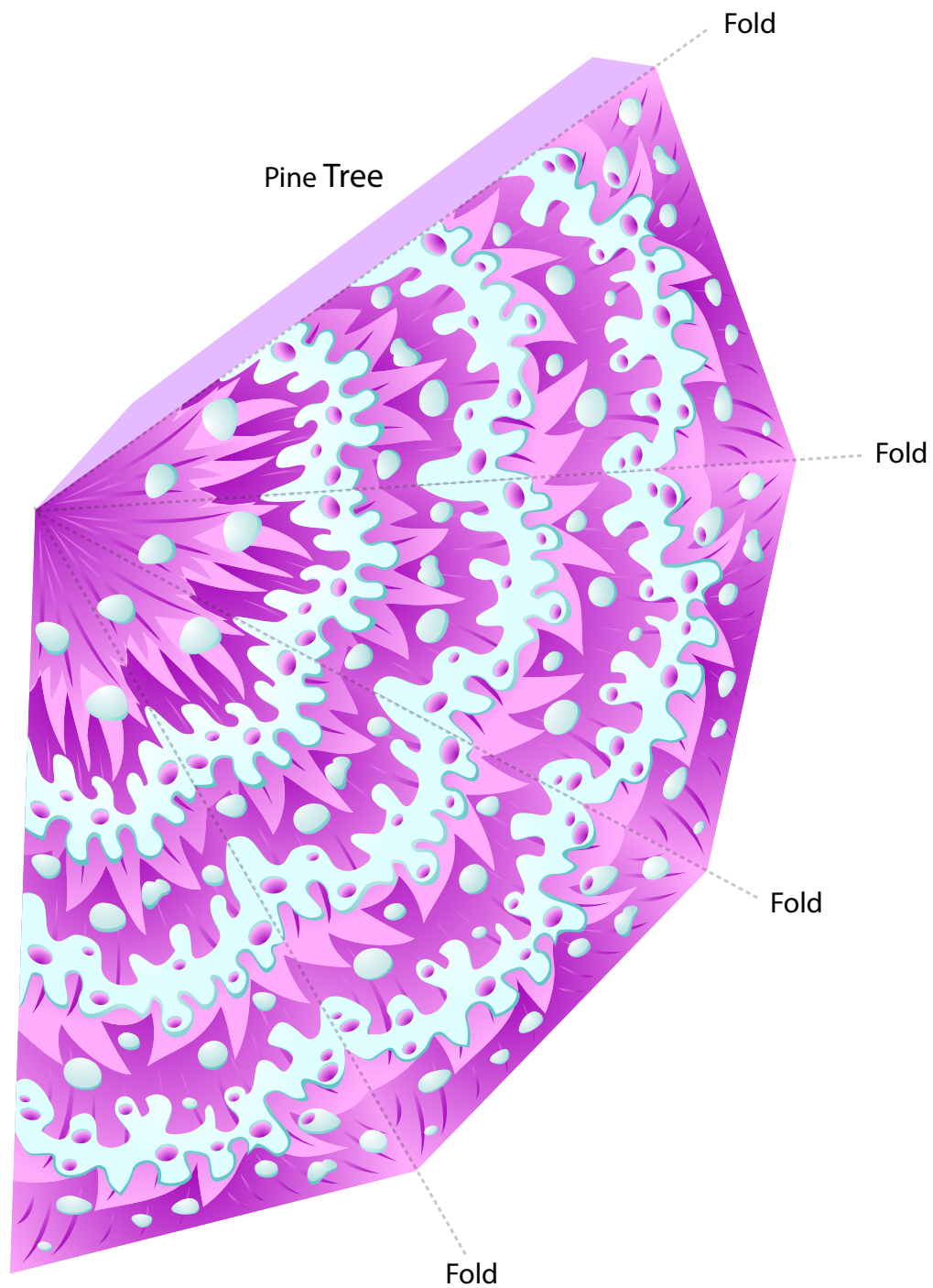


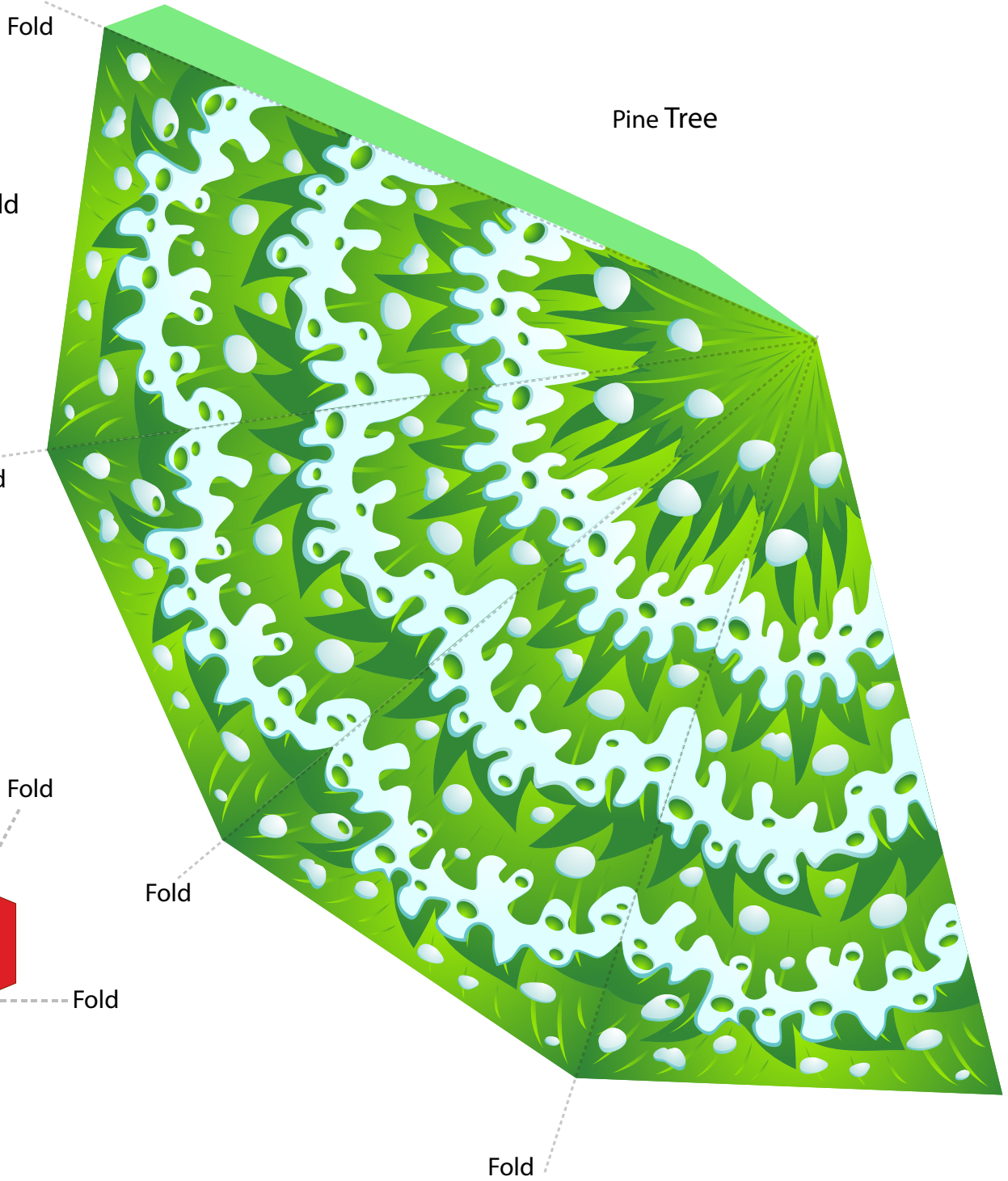
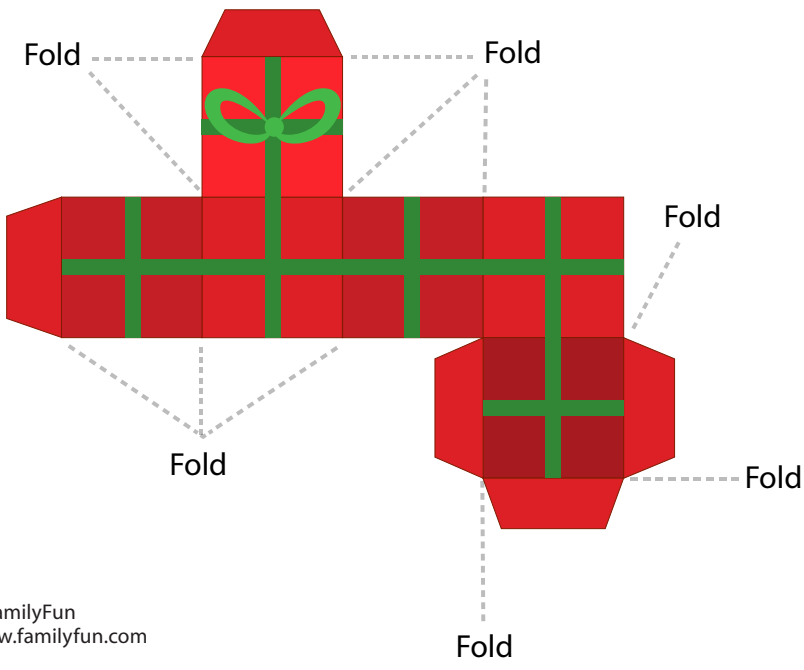
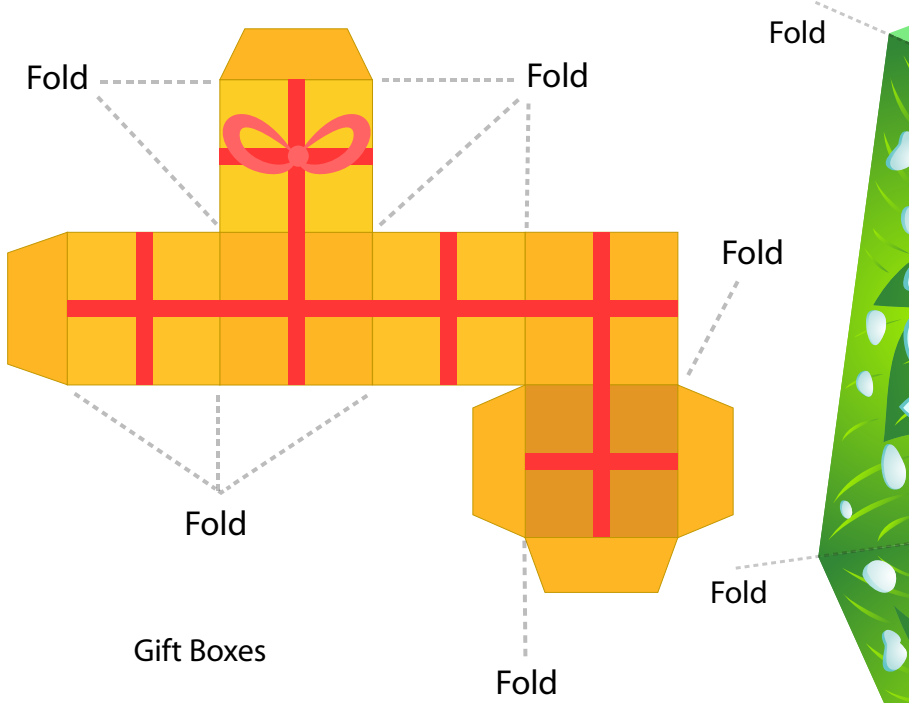
Fold

Santa's Reindeer



Pine Tree





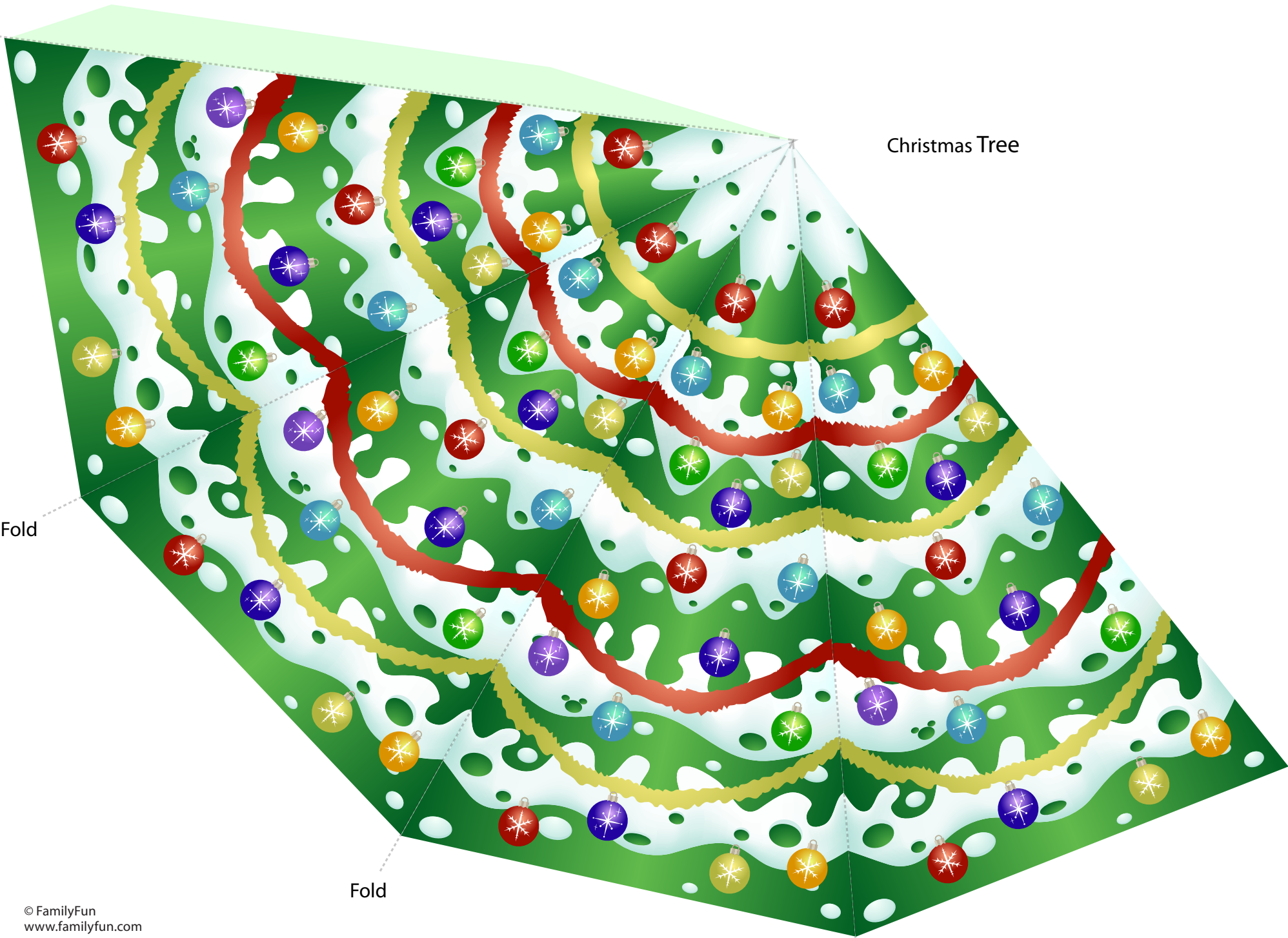
Fold

Christmas Tree

Fold

Fold

Fold



1. Cut out all of the Christmas Scene pieces.
2. Christmas Trees: Make the four indicated folds (away from you) on each tree. Form the tree by gluing the tab to the blank side of the last panel. Tip: Start at the base of the tree and work your way up, to insure the base is level.
3. Characters & Reindeer: Make the two folds as indicated and glue the front and the back side of the pieces together.
4. Gift Boxes: Make all of the indicated folds (away from you) on the box, including the five tabs, and then place glue on the tabs to form the box.