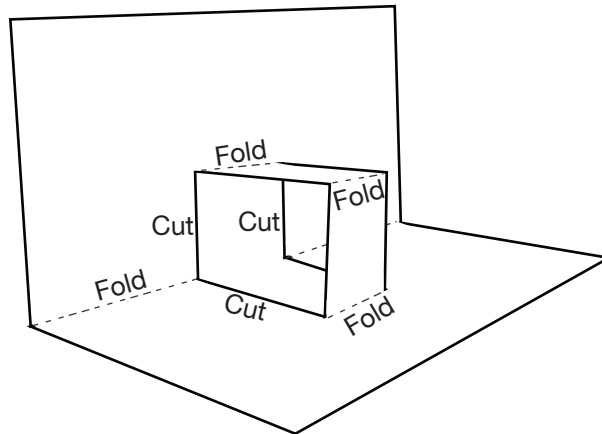




Print out all of the elements of the card. Use card stock for a more sturdy card. Cut out the "inside" and "outside" card pages and the shamrocks.

Use a craft knife to cut along the solid vertical lines of the strip that are located in the middle of the "inside" card. See Diagram A. Pinch the cut strip and fold along the middle dashed line in the opposite direction of the card fold. Then, fold the "inside" of the card in half, which will allow the cut strip to "pop up."

Diagram A



Put glue on the back of the "inside" card and attach the "outside" card to the "inside" card. Do not put glue on the cut strip.

Your card is almost complete. Add one of the shamrock's to the pop up strip with double-stick tape. Make sure you place the shamrock so that the card can close easily.

Add a special message, then present to a friend or family member. The person who receives the card can remove the shamrock and attach it with a pin to their shirt so that they won't get pinched on March 17th!