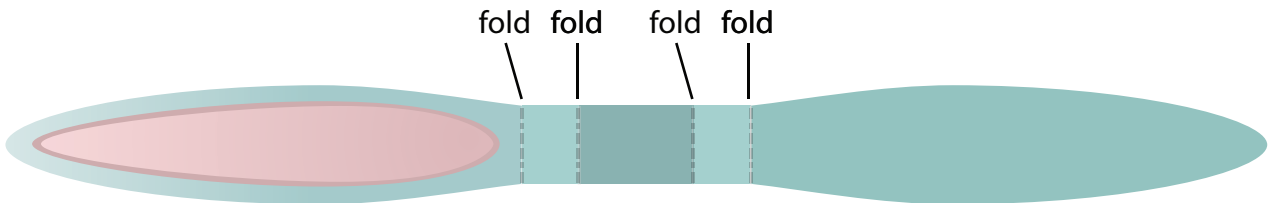
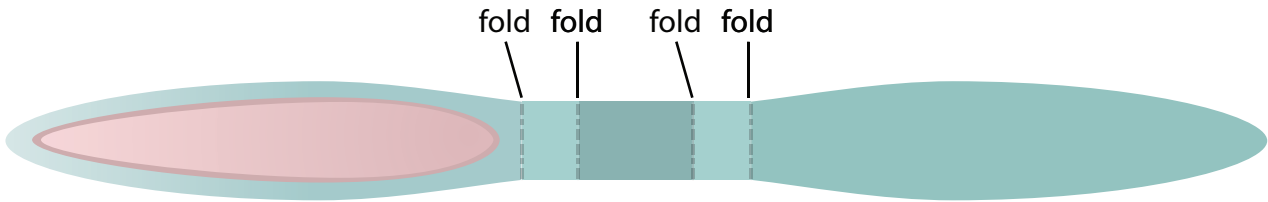
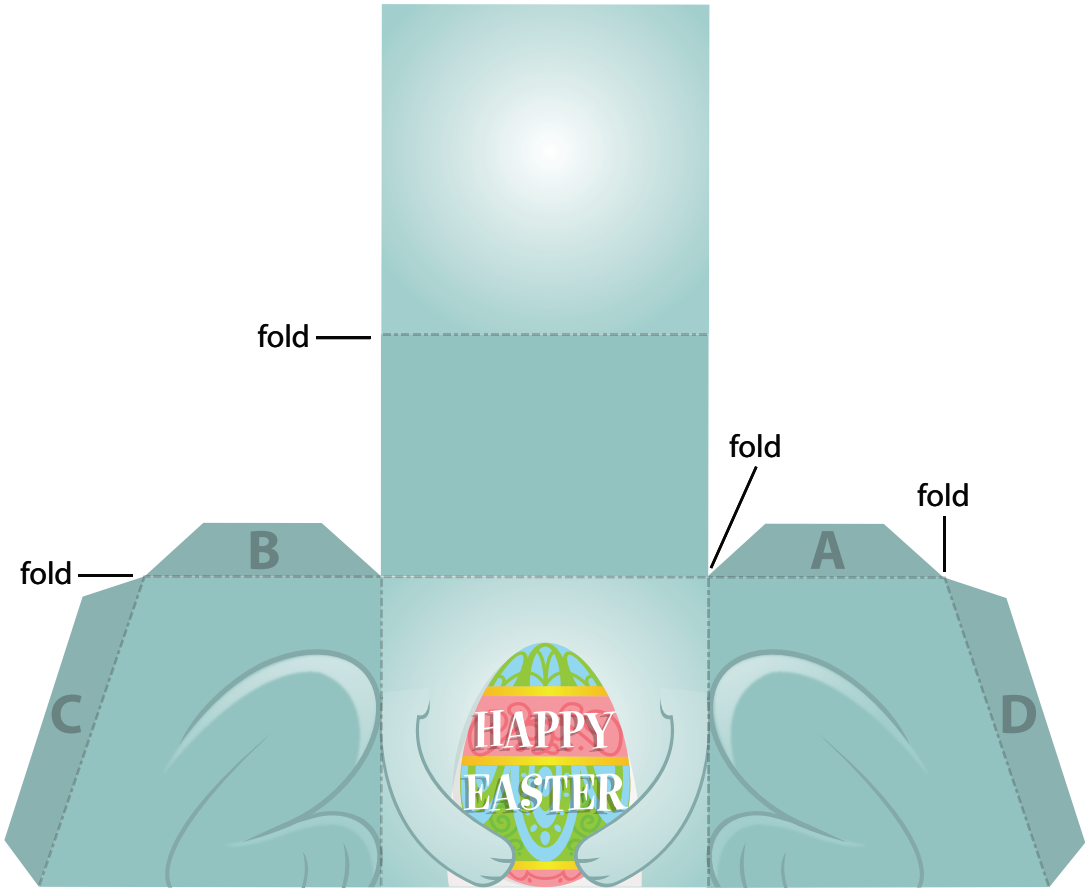


Ears



Bottom



1. Cut out the top part of the bunny. Use a craft knife to cut out the white space in the middle of the piece. Make folds (away from you) along the dotted lines, including the tabs. Glue the sides of the Bunny's head to tabs A and B. Next, put glue on the 10 small tabs (five on each side) on the side of the Bunny's head, then glue the back of the head to them. Glue tab C to the top of the Bunny's head so that the top piece is complete. Make sure that you hold each glued part in place for a few seconds before moving on to the next tab.
2. Cut out the bottom part of the Bunny. Make folds (away from you) along the dotted lines, including the four tabs. Glue tabs A & B underneath the top of the bottom piece. This piece should almost be taking a box shape now. Glue tabs C & D behind the front and your shape will be complete.
3. Cut out and fold the ears as shown in the diagram below. Put glue on the back of one of the Bunny's ears and glue them together. Put glue on the bottom tab and attach the ears to the Bunny's head.
4. Using glue, add a cotton ball or white pom-pom ball to the back of the Bunny as its tail. Fit the bottom piece into the top piece of the Bunny so that the character is complete.
5. Give this sweet bunny as a gift to a friend or family member for Easter.

Bunny Ears Diagram

