

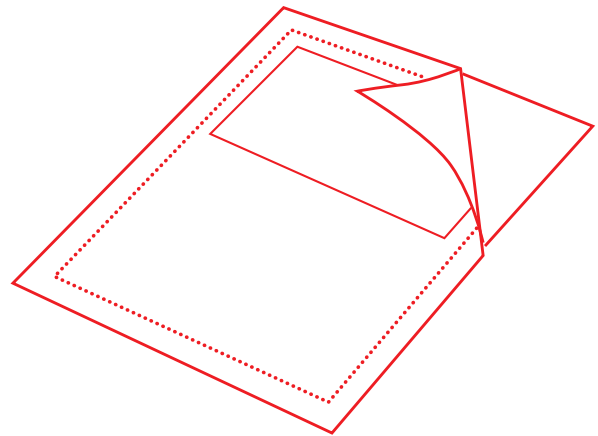
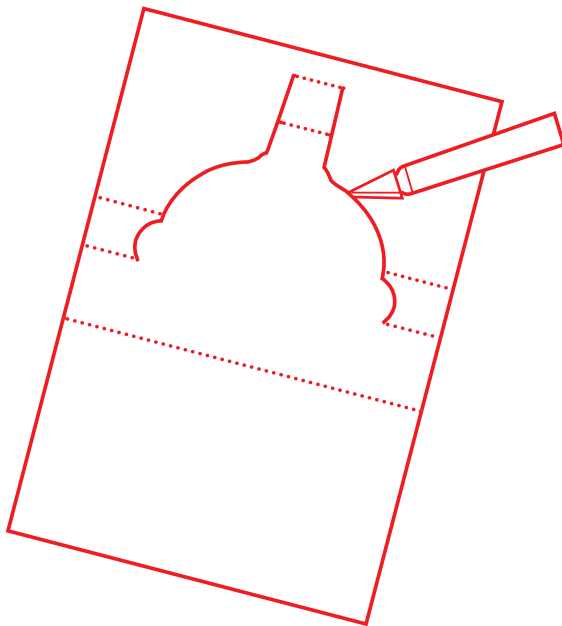


1. Type in your information (the occasion, the time, the location, and R.S.V.P. info) on the Mickey Park page.

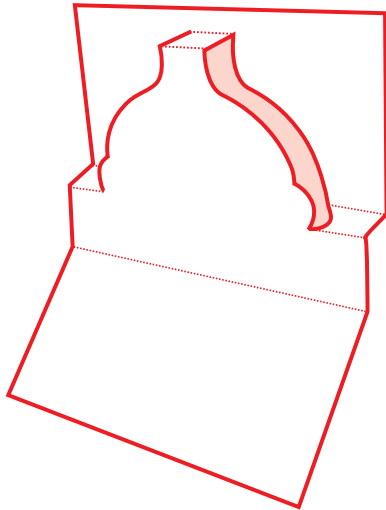
2. Print out all pages, and allow them to dry.

3. NOTE: Always seek the help of an adult when using cutting tools. Cut out the top of the entry gate on the Mickey Park page. Start from along the outside edge of the round red and yellow embellishments on the side, up across the white trim from the yellow edging of the fence, then up to the mouse ears at the top (not cutting across the dotted line) up vertically to the edge of the top, horizontal row of dotted lines. Make sure to do this on both sides.

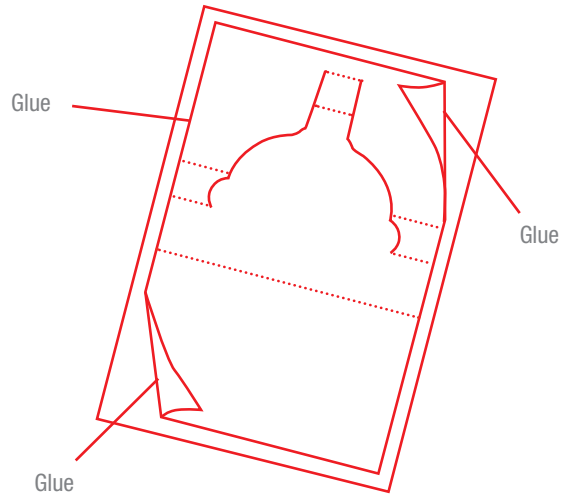
4. Glue the green paper to the pink paper. Allow to dry. Be sure to cut out the "You're Invited" message.



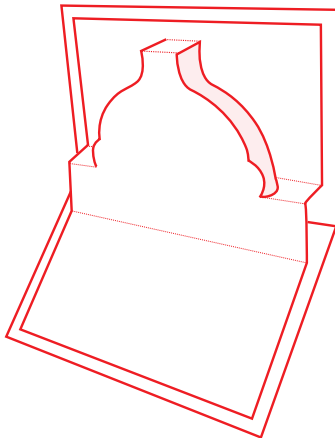
5. Score and fold along all dotted lines on the Mickey Park scene, in preparation for gluing.



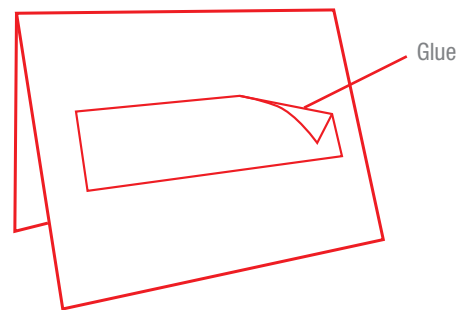
6. Pull the Mickey Park scene flat, then glue it to the pink paper, framing it so that the pink and green polka-dotted border is even. Only apply glue opposite the area that houses the party information and the park background above and around the Mickey Park gate section that you cut earlier (above the two dotted lines just below the trees on either side).



7. After the glue dries, crease and fold the entire card in the middle.



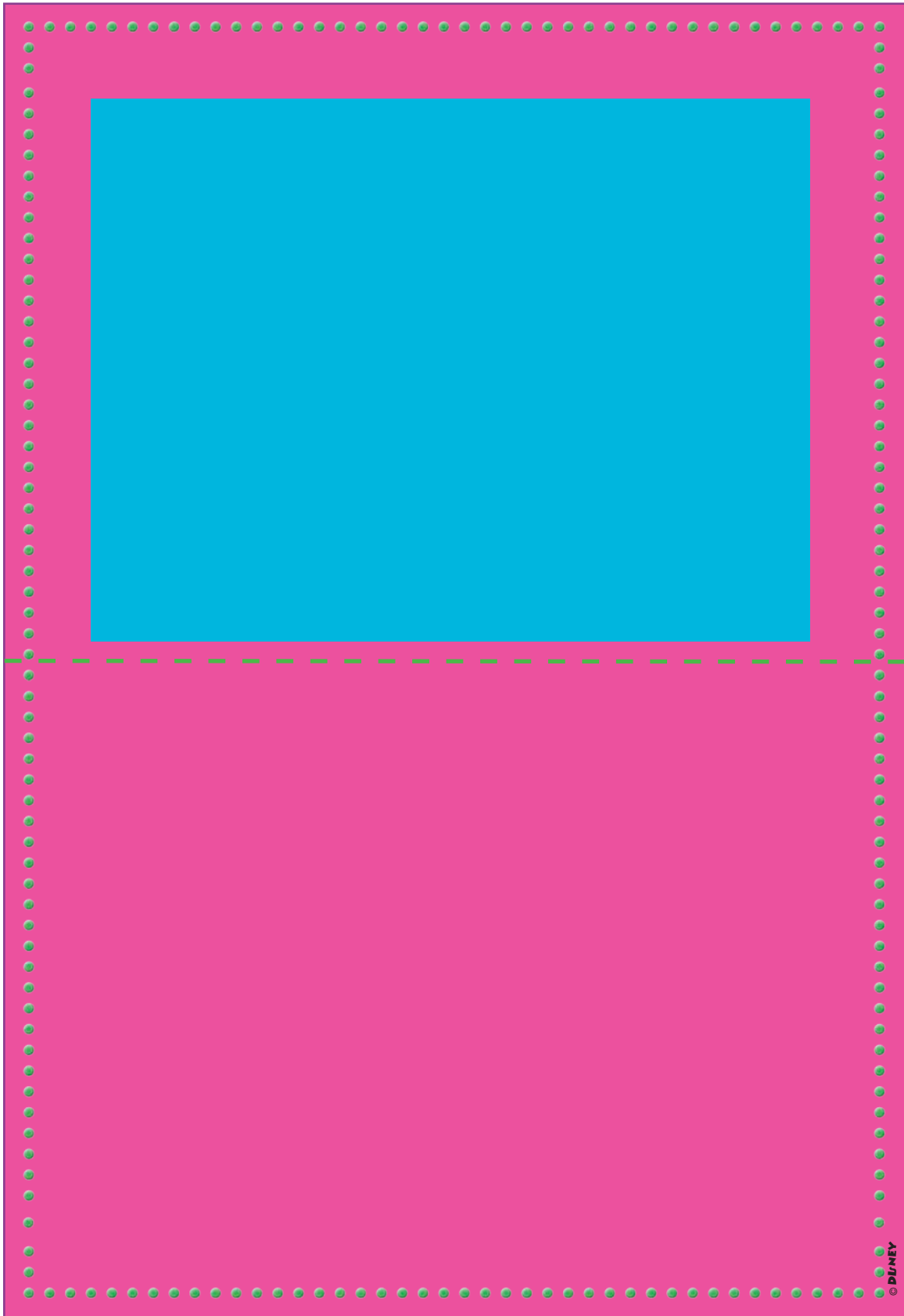
8. Glue the "You're Invited" message on the front of the folded card.











©Disney