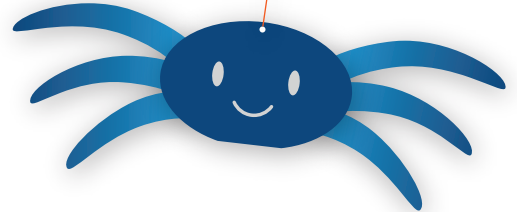
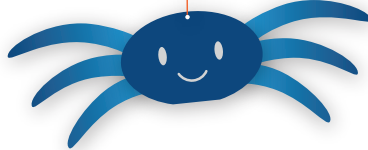




HANGING CREEPY CRAWLY

MATERIALS

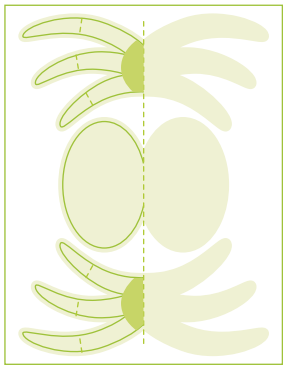
- 1 or more sheets of 8.5" x 11" heavyweight paper
- Scissors or cutting tool
- Multipurpose glue
- Metal-edged ruler
- Butter knife
- Hole punch
- String



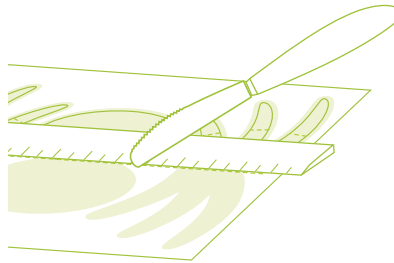
PRINTING AND ASSEMBLY INSTRUCTIONS

NOTE: Project assembly is intended for adults only.

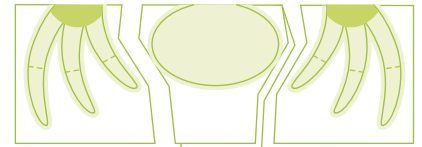
- 1** Print artwork and set aside to dry completely.



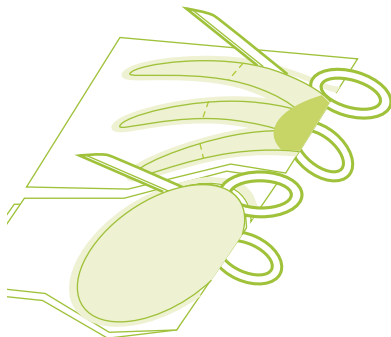
- 2** Score: Using a ruler as a guide, run the backside of a butter knife firmly along dotted lines.



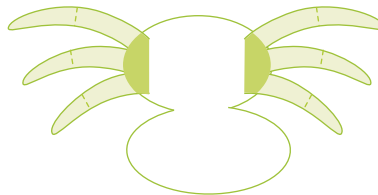
- 3** Cut around pieces to separate each, then fold each in half.



- 4** Glue folded leg pieces together and cut out legs along solid lines. Cut out head piece along solid line.



- 5** Create mountain folds on dotted lines on legs. Insert leg pieces (where shaded) in between either side of head piece and glue head together.



- 6** Punch a hold in the top of the head and hang with string.

