



## JUNE'S WITCH HAT

### MATERIALS

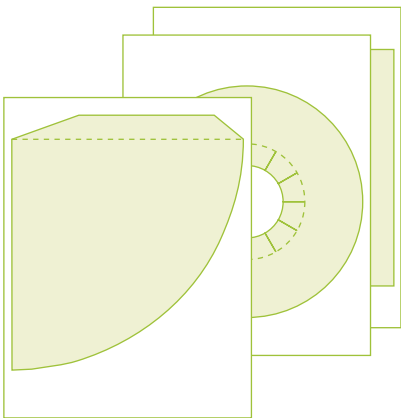
- 1 or more sheets of 8.5" x 11" heavyweight paper
- Scissors or cutting tool
- Multipurpose glue
- Metal-edged ruler
- Butter knife
- Hole punch
- Brads (2 per hat)
- String



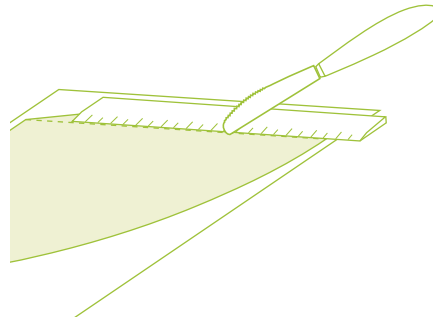
### PRINTING AND ASSEMBLY INSTRUCTIONS

NOTE: Project assembly is intended for adults only.

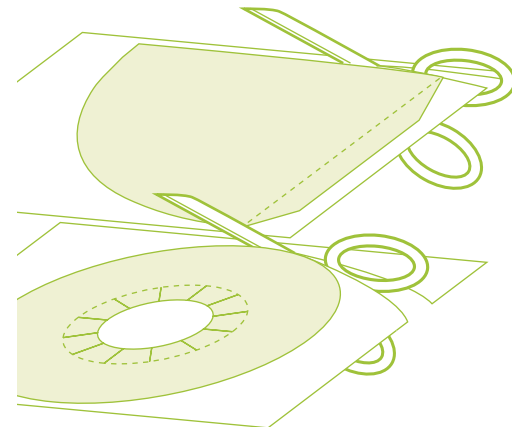
- 1** Print artwork and set aside to dry completely. Glue together the brim and black square back to back.



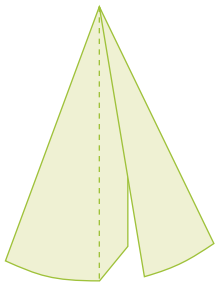
- 2** Score all the pieces: Using a ruler as a guide, run the backside of a butter knife firmly along dotted lines.



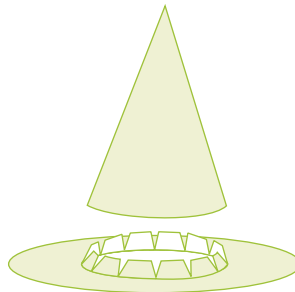
- 3** Cut out pieces on solid lines.



- 4** For the top portion of the hat, fold large tab inward on dotted line, curving hat into a cone, and glue to inside of hat. Allow to dry.

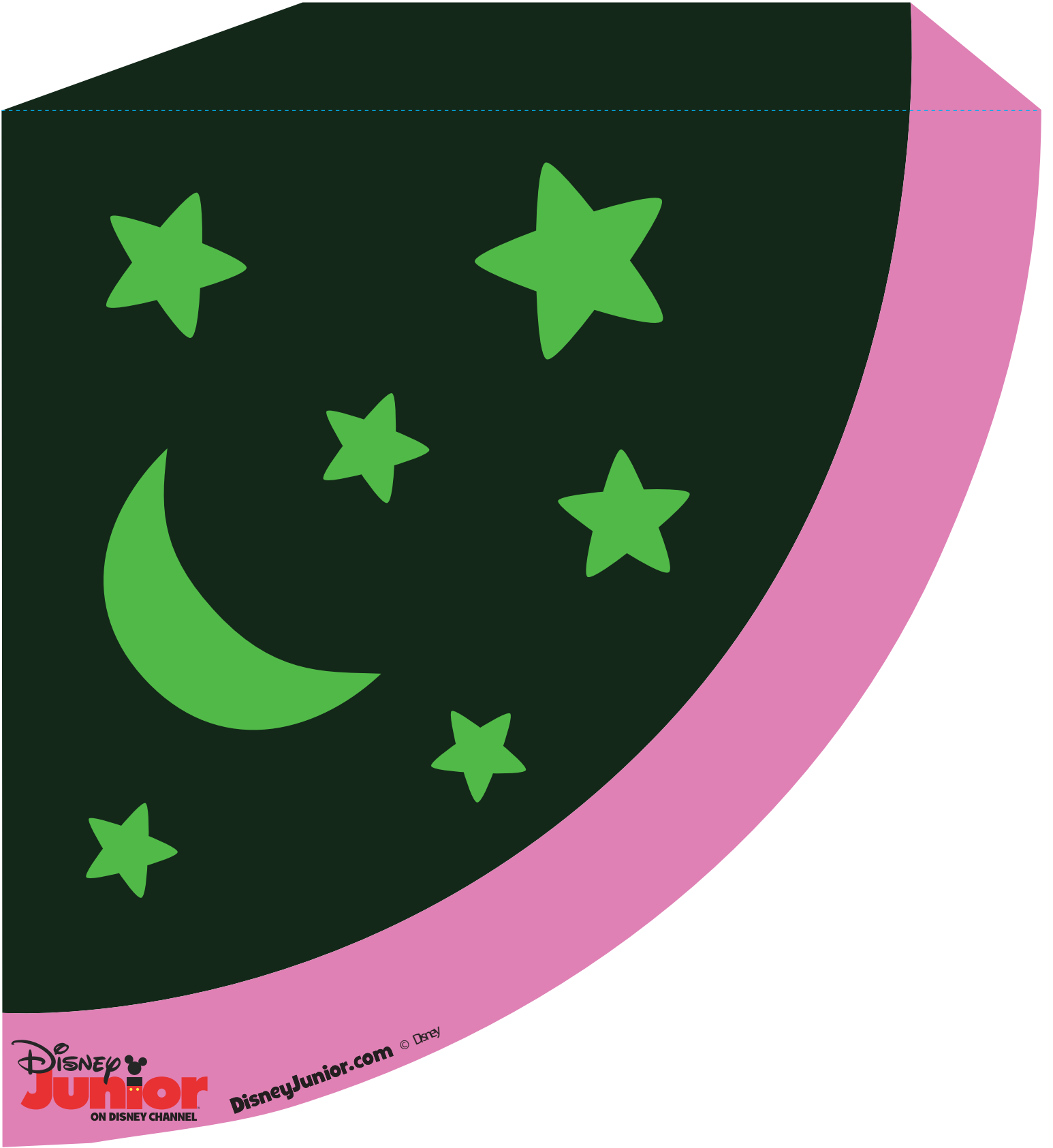


- 5** For the brim, fold all the tabs upward along the dotted circle. Next, glue the tabs to the lower inside of the cone. Allow to dry.



- 6** Insert a brad on either side of cone. Tie ribbon around the secured brads (on inside), and use to secure hat around child's head.



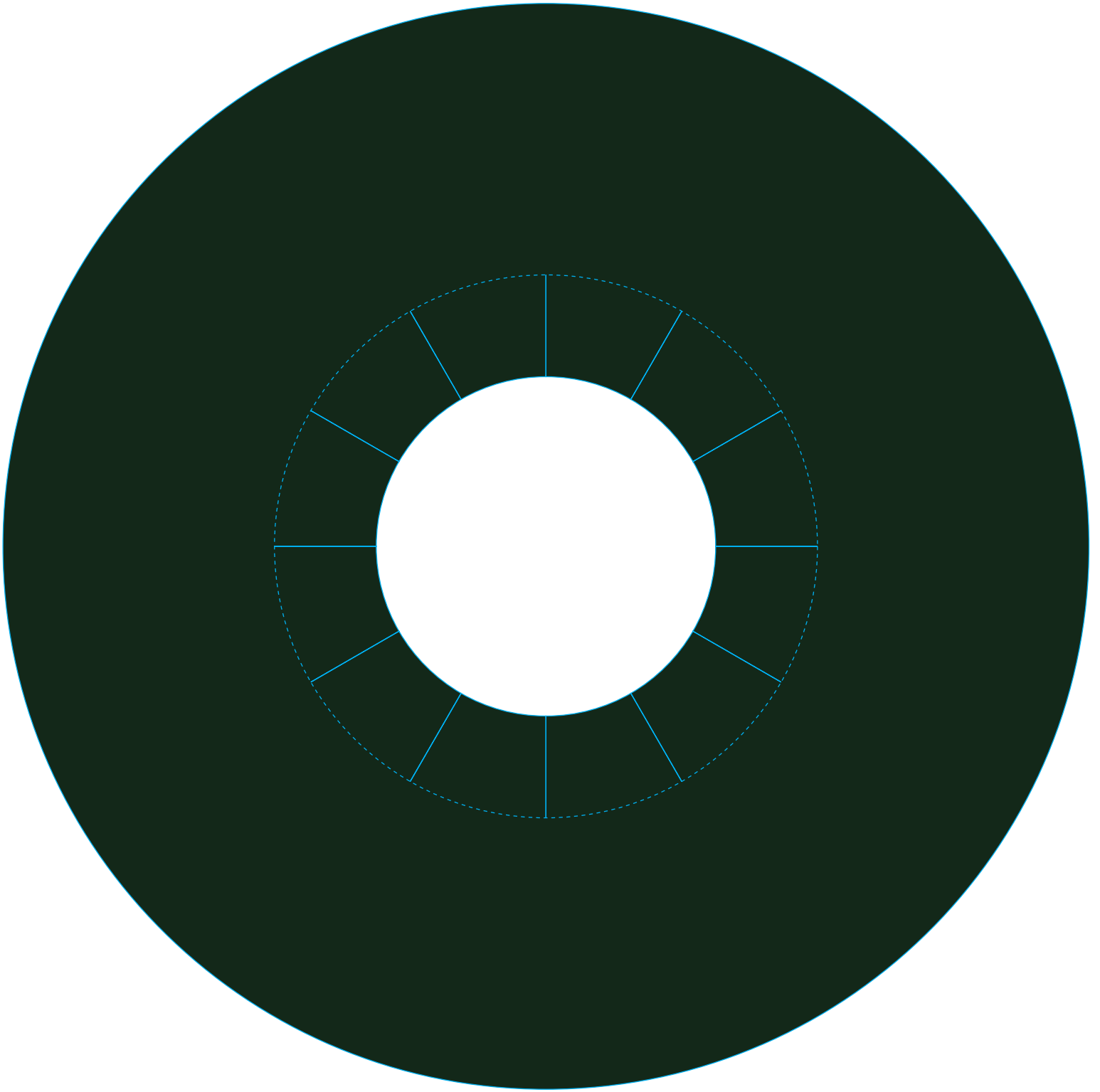


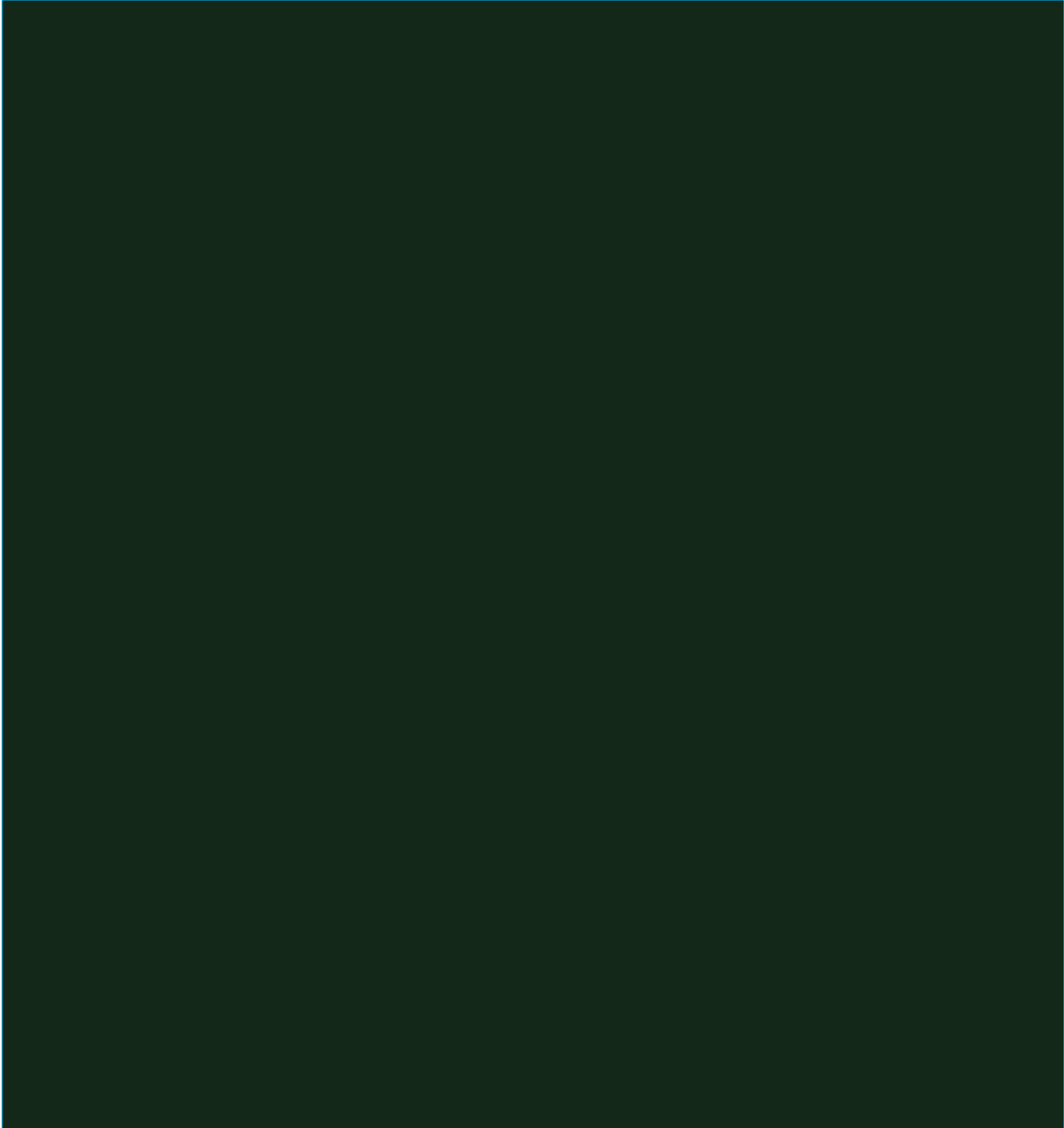
**Disney Junior**  
ON DISNEY CHANNEL

[DisneyJunior.com](http://DisneyJunior.com) © Disney

**Disney Junior**  
ON DISNEY CHANNEL

[DisneyJunior.com](http://DisneyJunior.com)





[DisneyJunior.com](http://DisneyJunior.com)