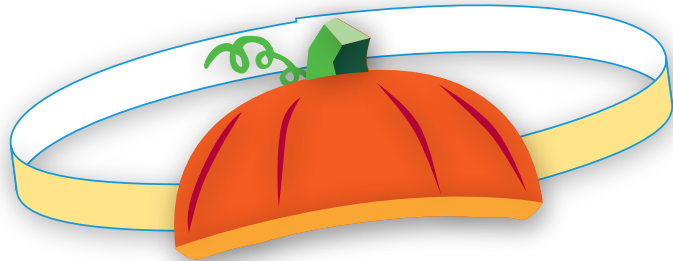




## ANNIE'S PUMPKIN HAT

### MATERIALS

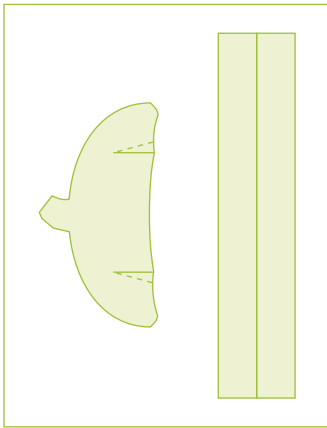
- 1 or more sheets of 8.5" x 11" heavyweight paper
- Scissors or cutting tool
- Multipurpose glue
- Green curling ribbon (optional)



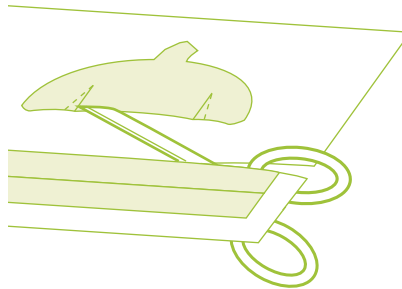
### PRINTING AND ASSEMBLY INSTRUCTIONS

NOTE: Project assembly is intended for adults only.

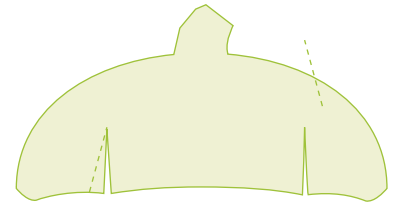
- 1** Print artwork and set aside to dry completely.



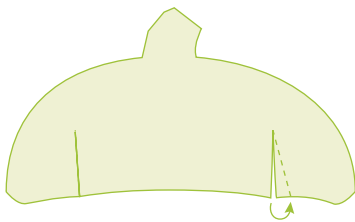
- 2** Cut out the pumpkin top and bands along solid lines. Cut between bands to separate them.



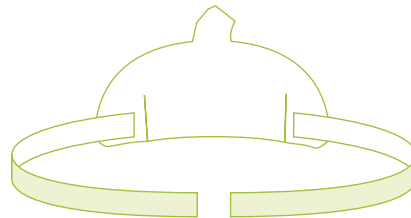
- 3** Create notches on the pumpkin piece: Cut along the solid cut marks and place a dot of glue on triangle between the two lines.



- 4** Pinch the two sides of the cut together, tucking the triangle behind until the cut and the dotted line meet. Repeat with other notch.



- 5** Glue one end of each band to inside lower corner of pumpkin piece. Allow to dry.



- 6** Measure to child's head, and glue bands together to fit size. Allow to dry. Add some green curling ribbon to embellish and your pumpkin hat is ready to wear!



