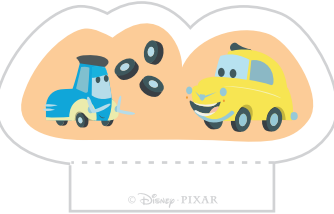




Radiator Springs Playset



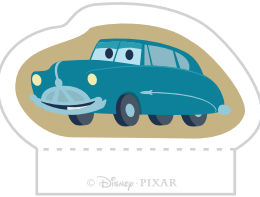
Luigi & Guido



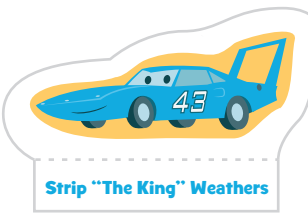
© Disney PIXAR



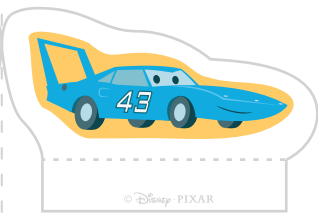
Doc Hudson



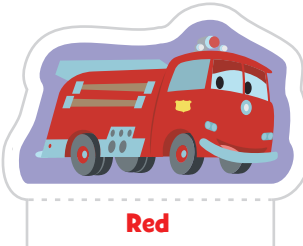
© Disney PIXAR



Strip "The King" Weathers



© Disney PIXAR



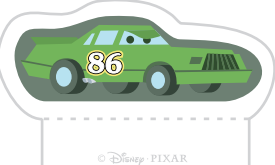
Red



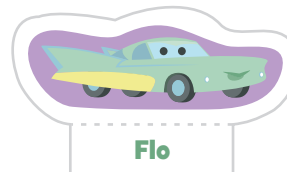
© Disney PIXAR



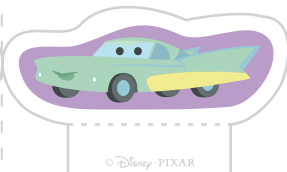
Chick Hicks



© Disney PIXAR



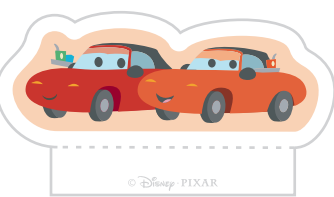
Flo



© Disney PIXAR



Mia & Tia



© Disney PIXAR



Mater



© Disney PIXAR



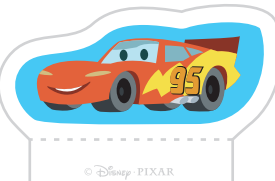
Lizzie



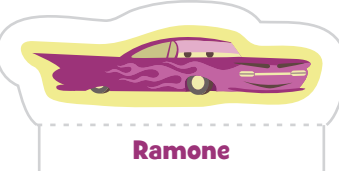
© Disney PIXAR



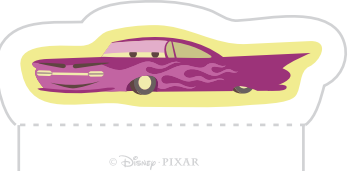
Lightning McQueen



© Disney PIXAR



Ramone



© Disney PIXAR



Sheriff



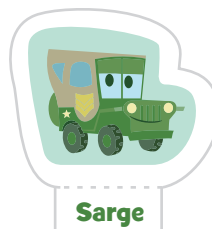
© Disney PIXAR



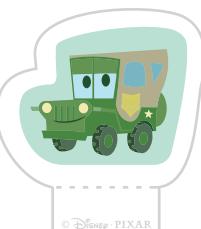
Fillmore



© Disney PIXAR



Sarge



© Disney PIXAR



Tex Dinoco



© Disney PIXAR



Sally



© Disney PIXAR

Radiator Springs Playset



Radiator Springs Playset





Radiator Springs Playset



1. Print out the pages on regular paper or cardstock and cut out all of the pieces on the first page. Don't cut along the dashed lines. This is where you will fold the paper.
2. Fold one piece in half along the dashed line. Spread glue on the white side of the paper behind the design, leaving the white tabs at the bottom glue-free. Make sure the two sides are lined up correctly. Press until the glue dries. Repeat for all pieces.
3. Fold the bottom white tabs outward in opposite directions to create a stand for your characters.
4. Take the pages of the road map and cut the white border off of both pieces.
5. Line up the road at the bottom of page 2 and the top of page 3 and glue or tape them together. It's time to hit the open road of Radiator Springs!