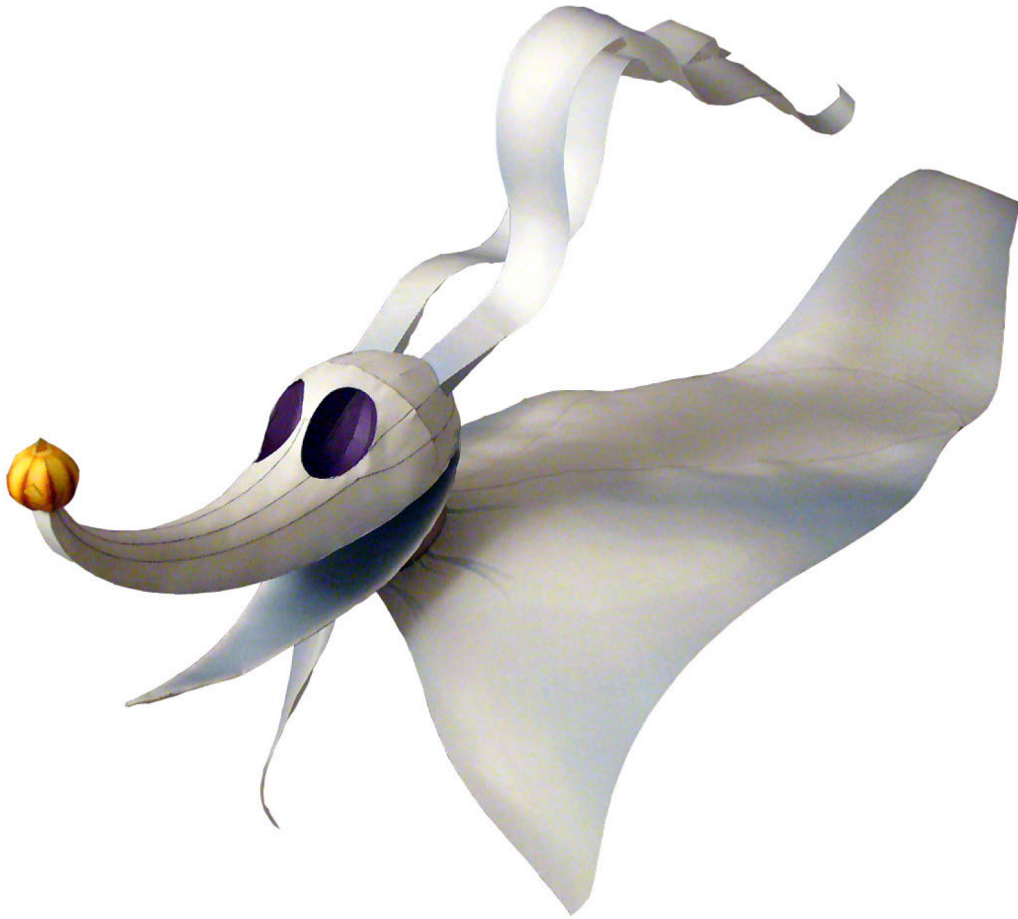
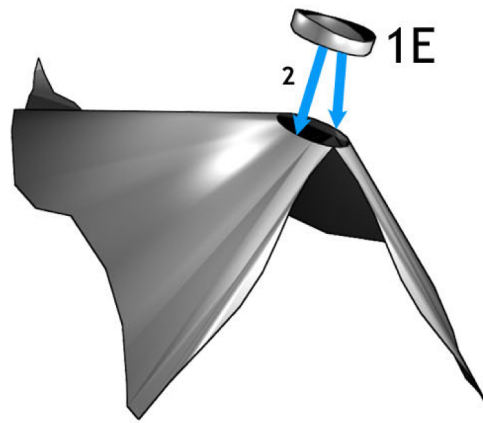
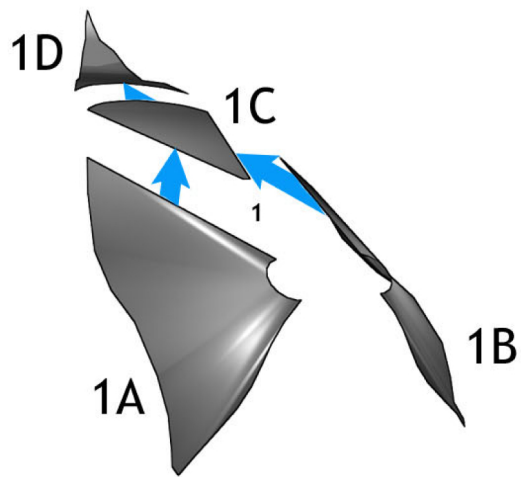


# Zero

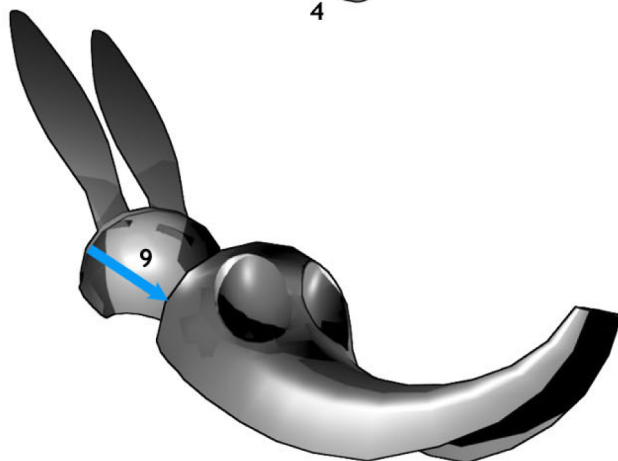
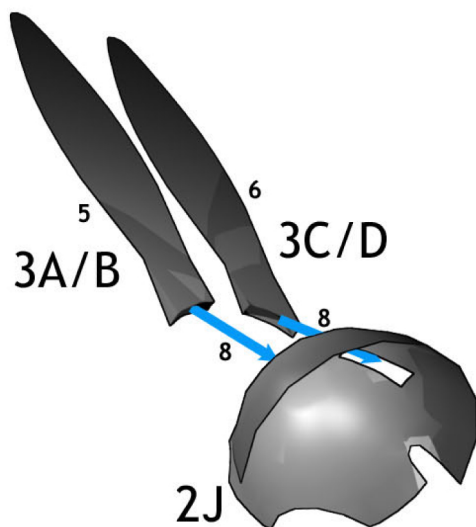
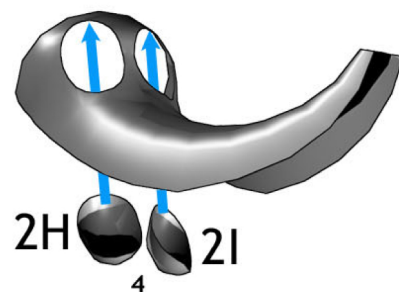
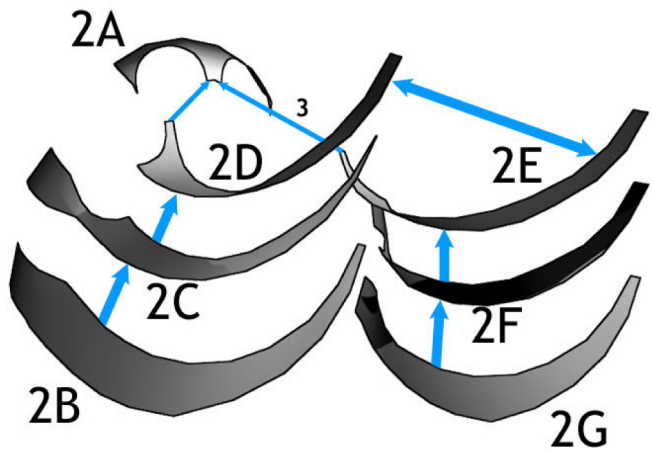


Look through the pages and become acquainted with the various pieces. Read the instructions and study the illustrations to know what/where to cut/fold. Before gluing, always dry-fit the pieces to ensure that they fit properly.

When assembling the model and following the instructions, do not take the illustrations too literally. In many cases, pieces will be simplified. Other times, pieces (or entire sections) may be missing that were once

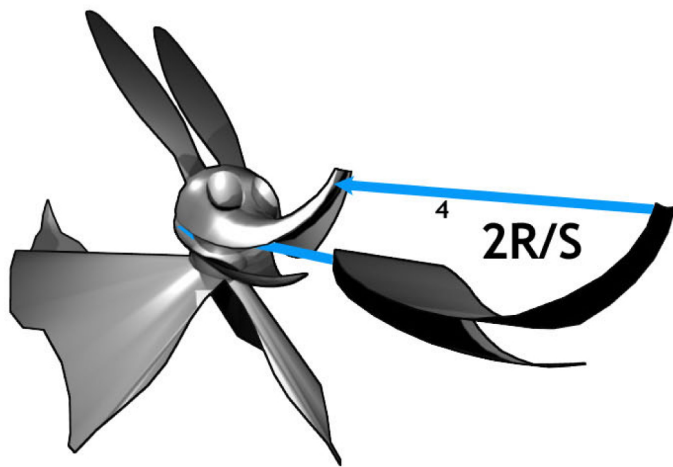
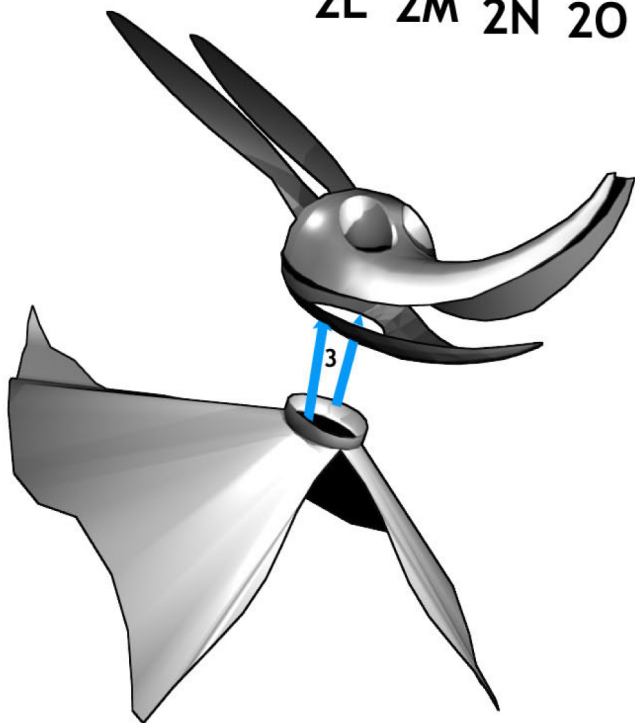
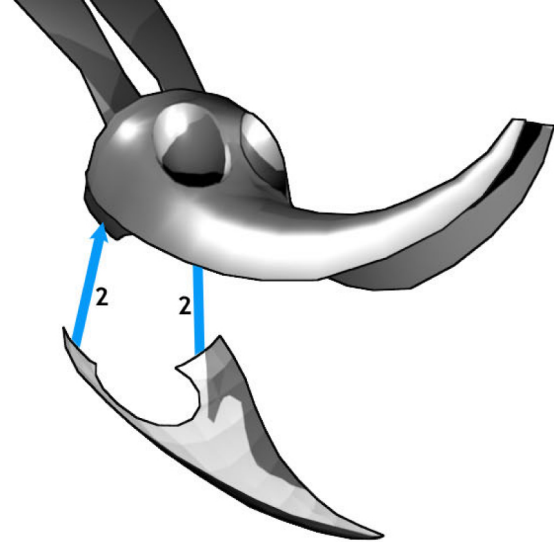
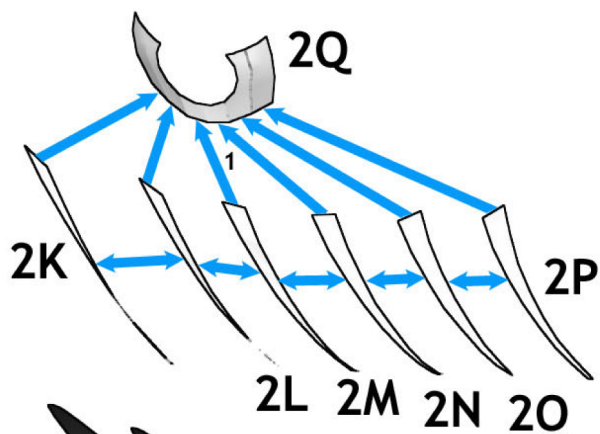


1. Assemble pieces 1A-D as shown to form the body.
2. Assemble piece 1E as shown, then glue the tabs to the underside of pieces 1A & B. The seam on the collar should face forward.
3. Assemble pieces 2A-G as shown.
4. Assemble pieces 2H & I, then glue to the underside of the face.
5. Glue piece 3B to the underside of piece 3A.
6. Glue piece 3D to the underside of piece 3C.
7. Assemble piece 2J as shown.
8. Insert the tabs of the ears into the rectangular holes in piece 2J. Fold and glue the tabs to the inside of piece 2J.
9. Glue the skull to the face.

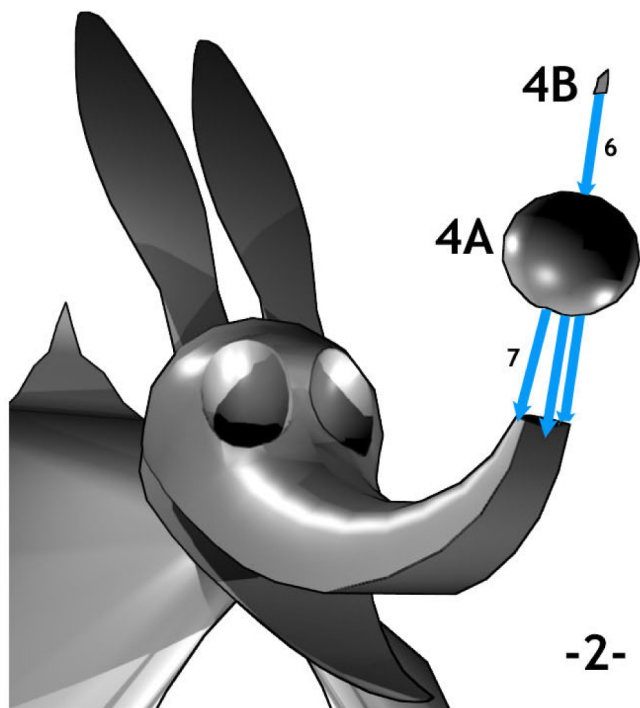


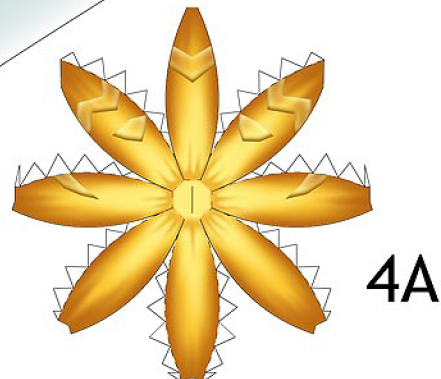
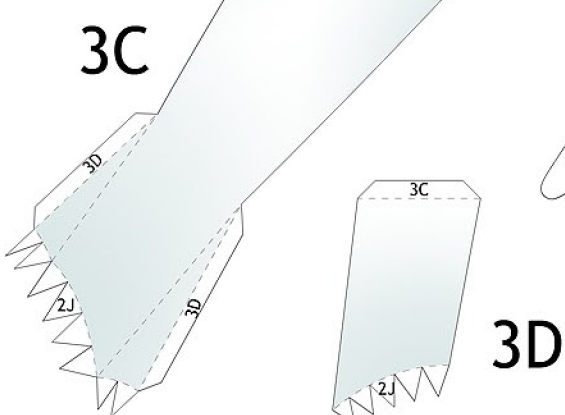
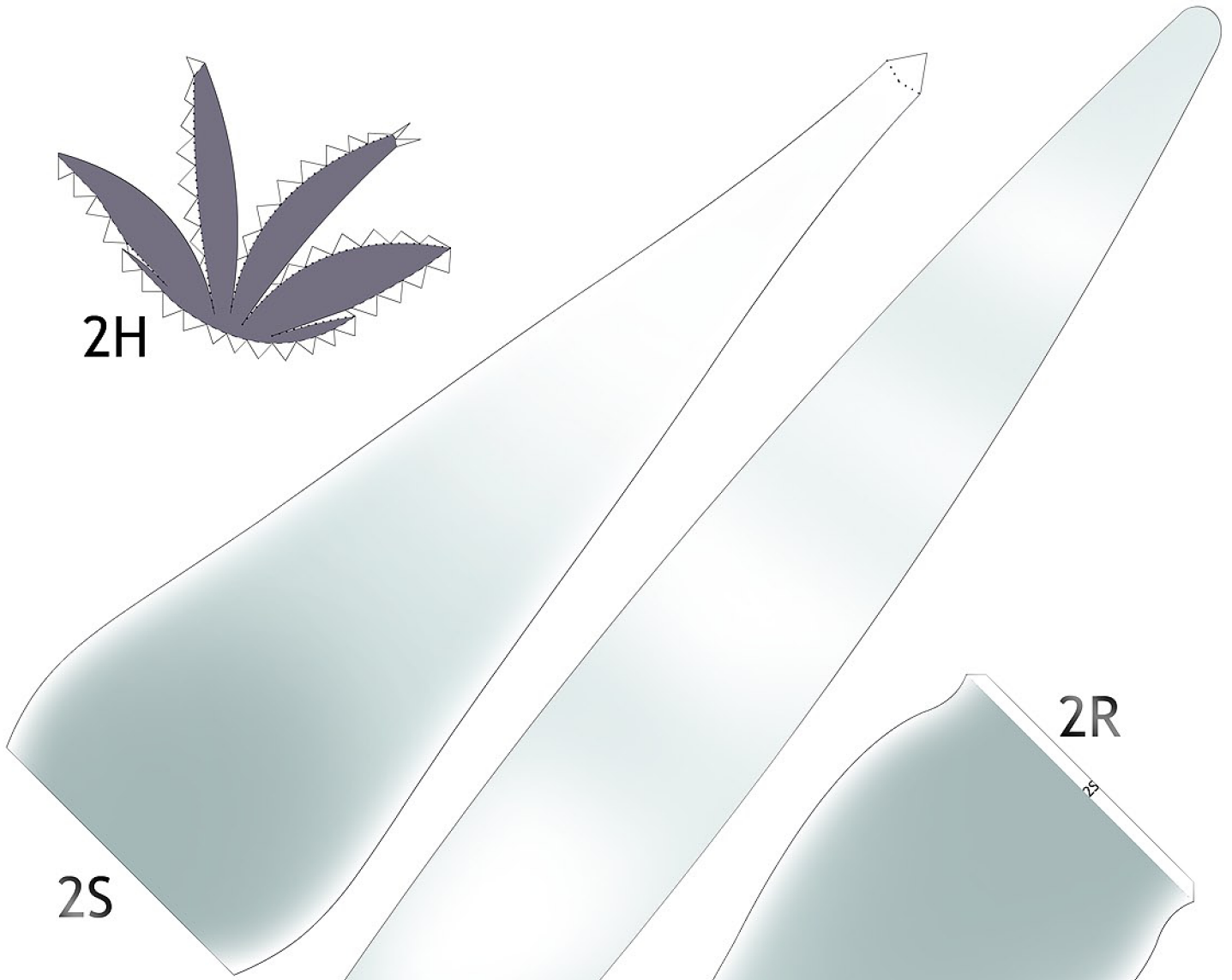
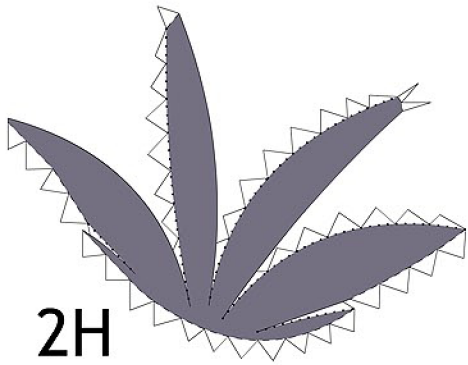
-1-



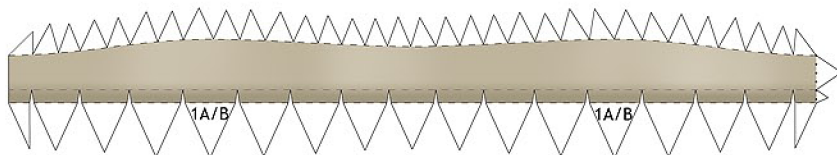


1. Assemble pieces 2K-Q as shown.
2. Glue the lower jaw to the head.
3. Insert the tabs of the collar into the hole in the bottom of the head. Fold and glue the tabs to the inside of the head.
4. Glue pieces 2R & S together, then glue to the mouth and muzzle. This part takes time and patience.
5. Cut a slit along the line on piece 4A, then assemble into a sphere.
6. Fold and glue piece 4B, then insert and glue into the slit on piece 4A.
7. Glue the pumpkin (face forward) over the end of the muzzle.
8. Gently roll and curve the body and ears to your liking.

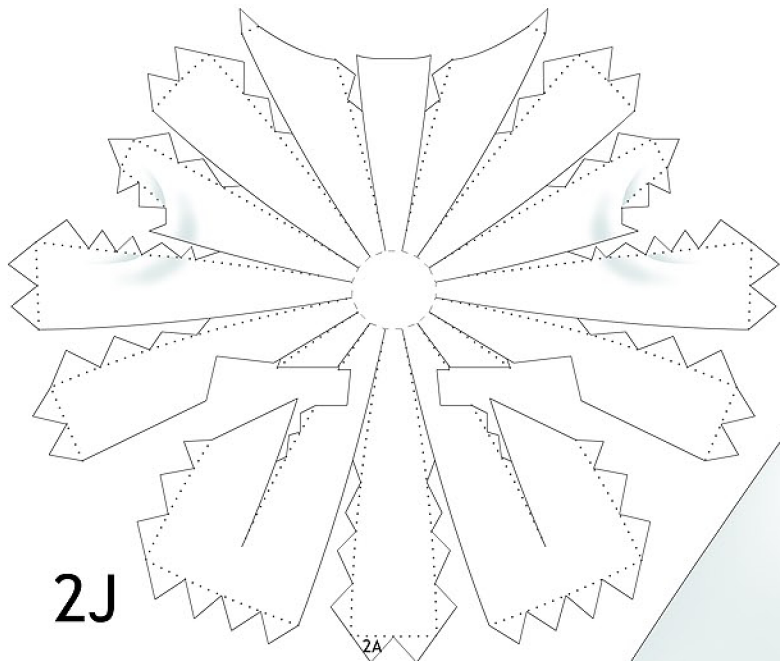




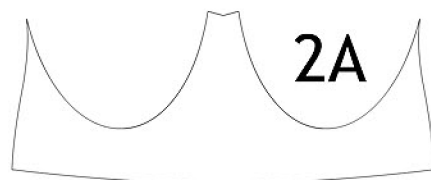
1E



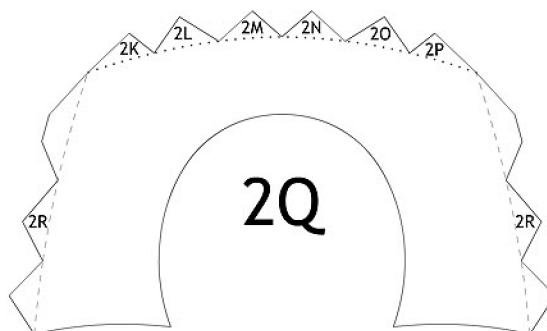
2J



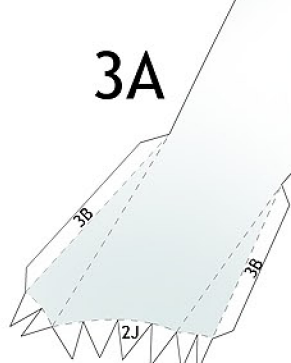
2A



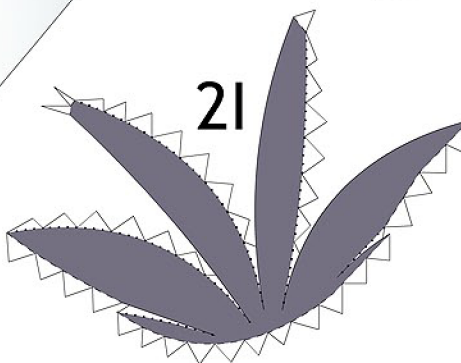
2Q



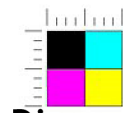
3A

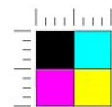
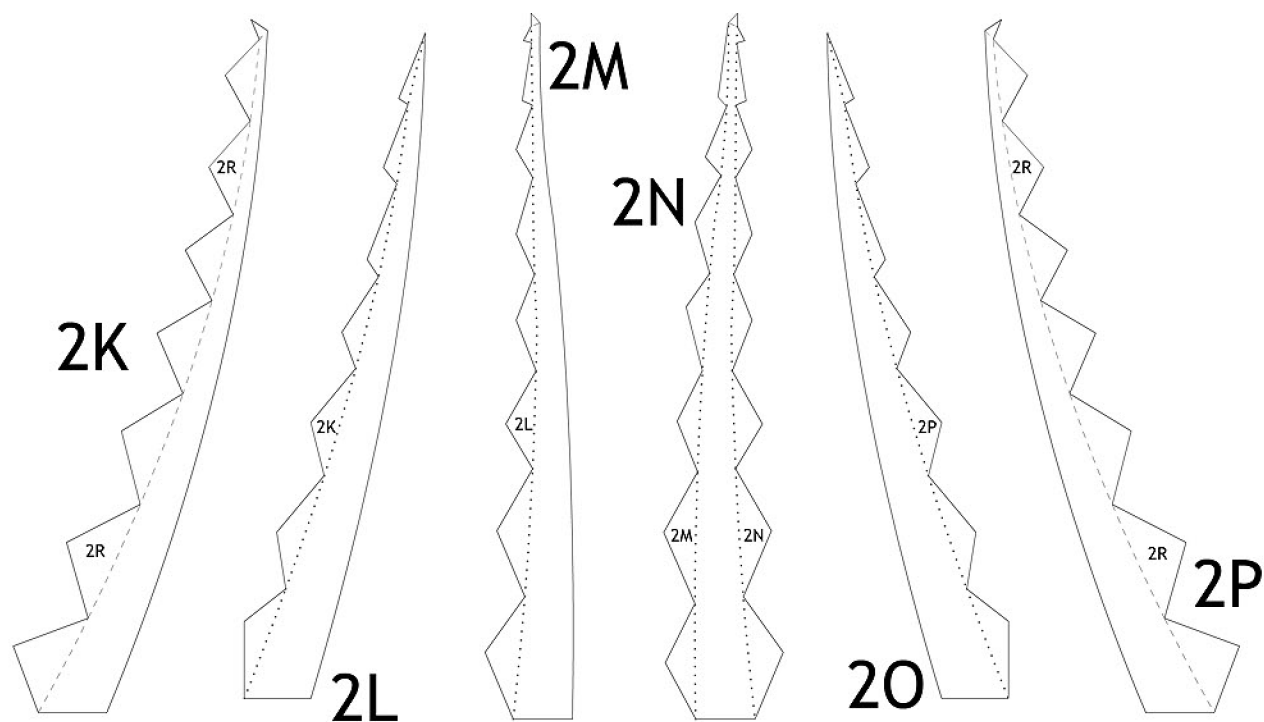
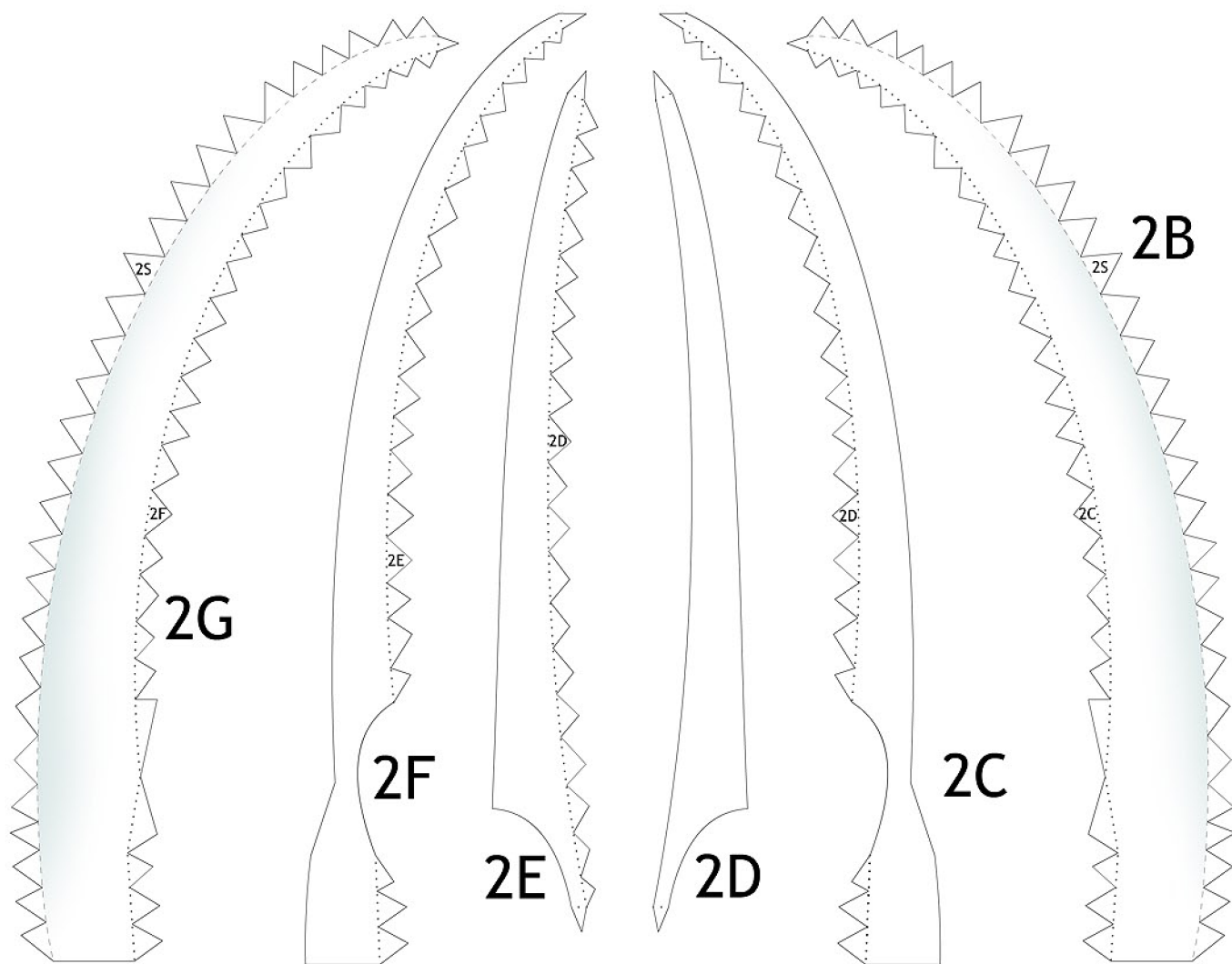


2I

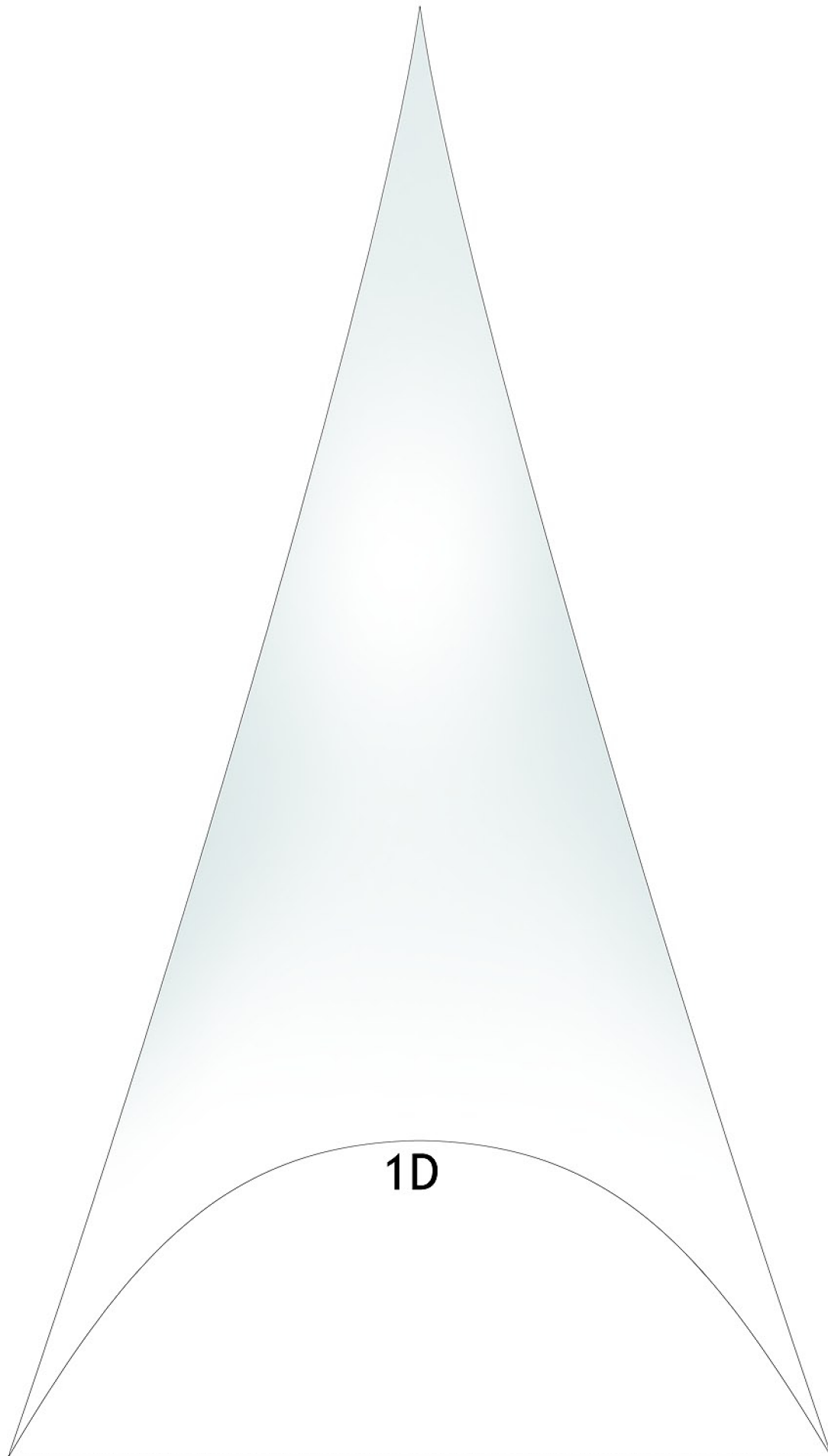


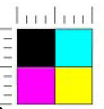
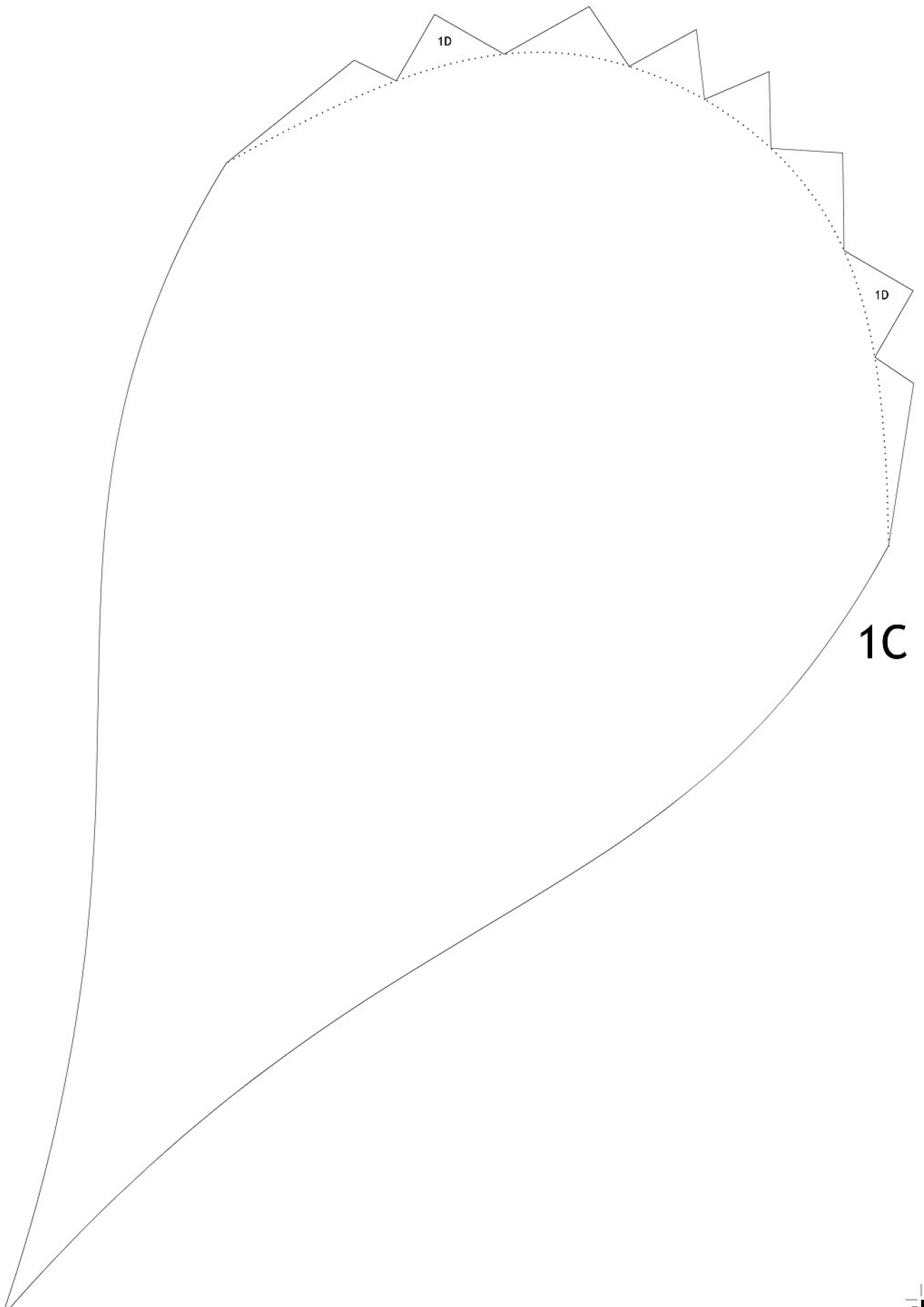
3B













1A

1C

