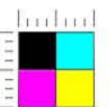


**Cursed
Aztec Gold**



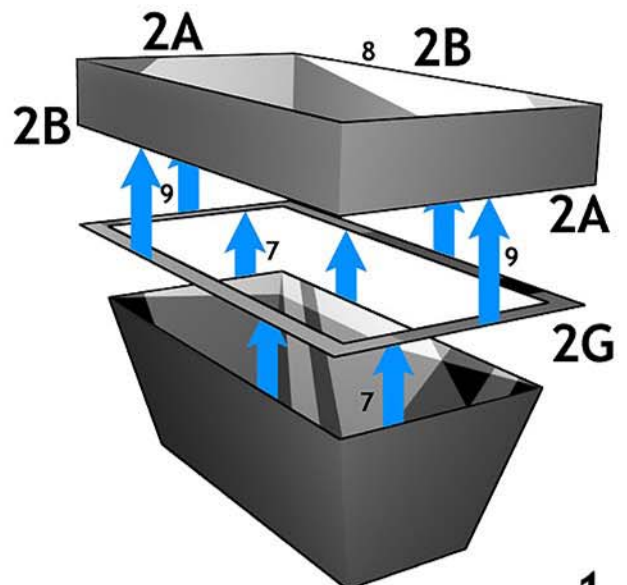
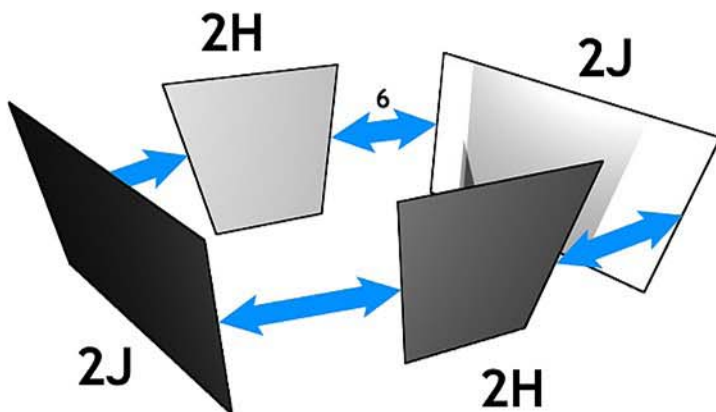
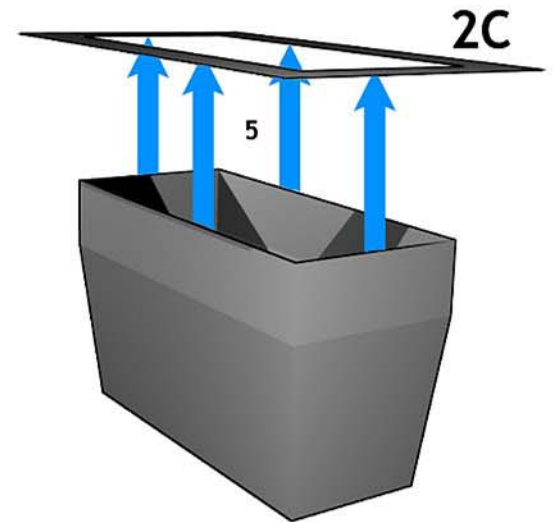
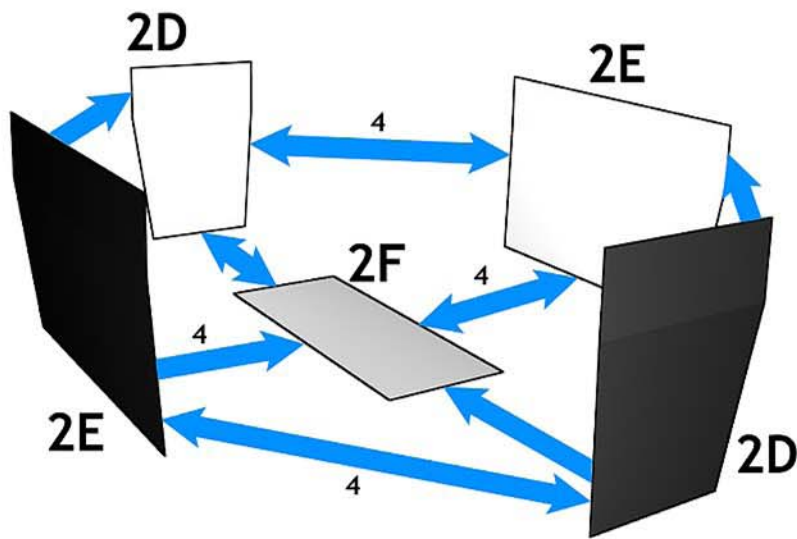
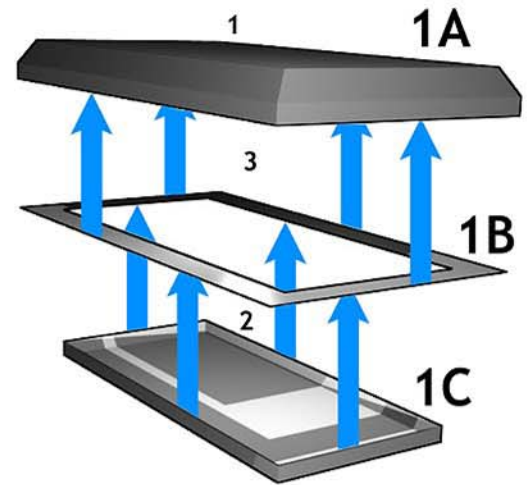
Cursed Treasure of Cortez



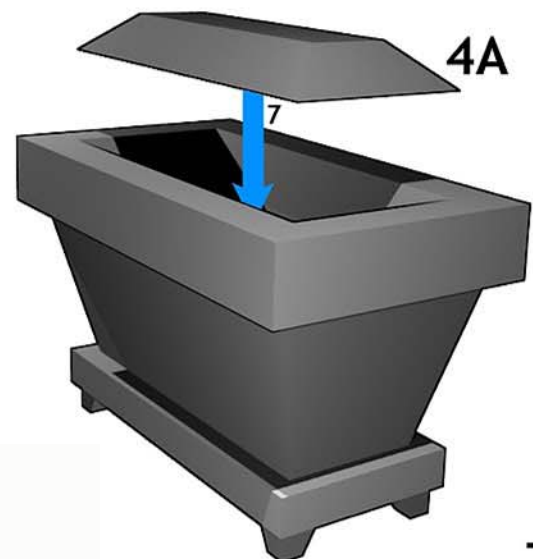
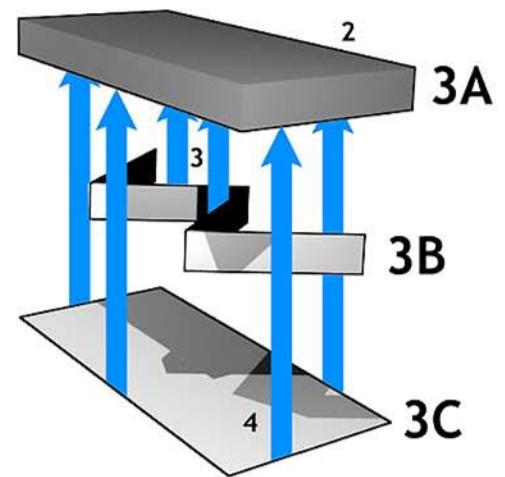
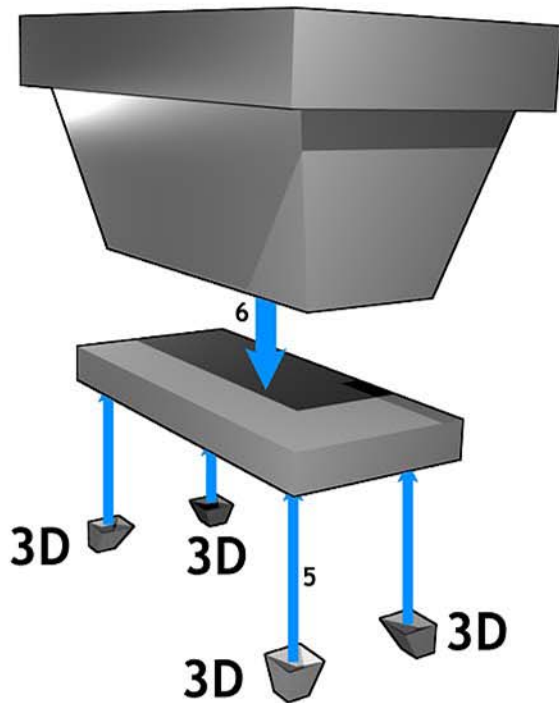
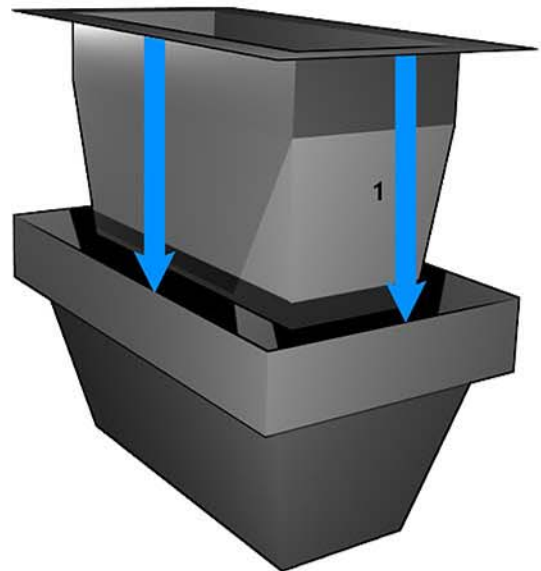
Look through the pages and become acquainted with the various pieces. Read the instructions and study the illustrations to know what/where to cut/fold. Before gluing, always dry-fit the pieces to ensure that they fit properly.

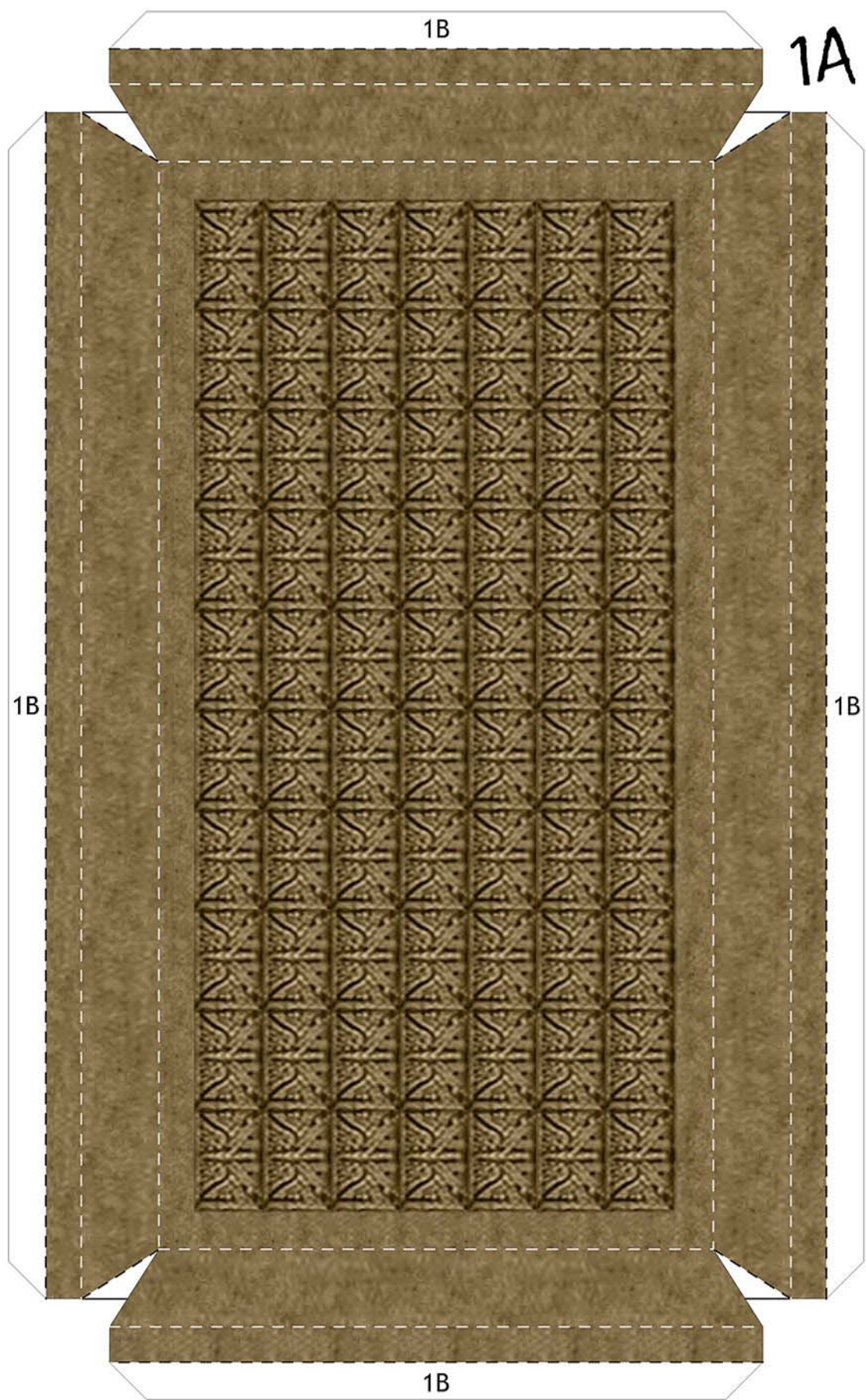
When assembling the model and following the instructions, do not take the illustrations too literally. In many cases, pieces will be simplified. Other times, pieces (or entire sections) may be missing that were once

1. Assemble piece 1A as shown.
2. Glue piece 1C to piece 1B. In the diagram (right), the printed sides face down.
3. Glue the bottom of the lid to piece 1A.
4. Glue pieces 2D, E, & F to each other, the printed sides facing inward. These are the inner walls of the chest.
5. Glue the assembly to the inner edge of piece 2C. Piece 2C's printed side faces up.
6. Glue pieces 2H & J to themselves, the printed sides facing outward. These are the outer walls of the chest.
7. Glue the outer wall assembly to the inner edge of piece 2G. Piece 2G's printed side faces down.
8. Glue pieces 2A & B together, the printed sides facing out.
9. Glue pieces 2A & B to the outer edge of piece 2G.



1. Set the inner wall assembly inside the outer wall assembly. Glue pieces 2A & B to the outer edge of piece 2C.
2. Assemble piece 3A, printed side facing outward.
3. Fold piece 3B as shown, then glue it to the underside of piece 3A. This will provide some added support.
4. Glue piece 3C to pieces 3A & B. In the diagram (right), the printed side faces down.
5. Assemble pieces 3D as shown and glue to piece 3C.
6. Glue the upper chest assembly to the top of piece 3A.
7. Assemble piece 4A as shown, printed side facing up. The treasure can either be glued inside the chest or not, depending on what you prefer.



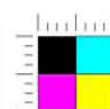


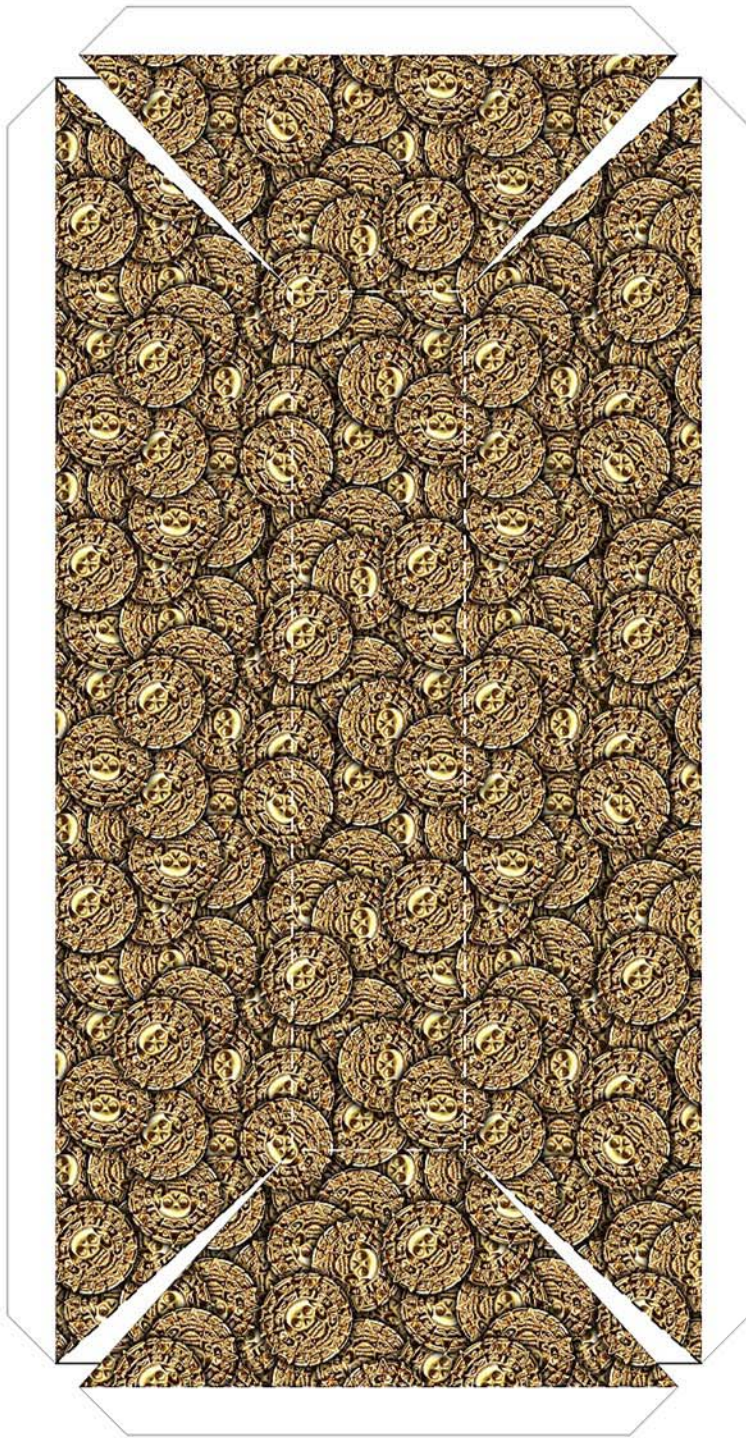


3C

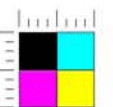


2F



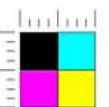


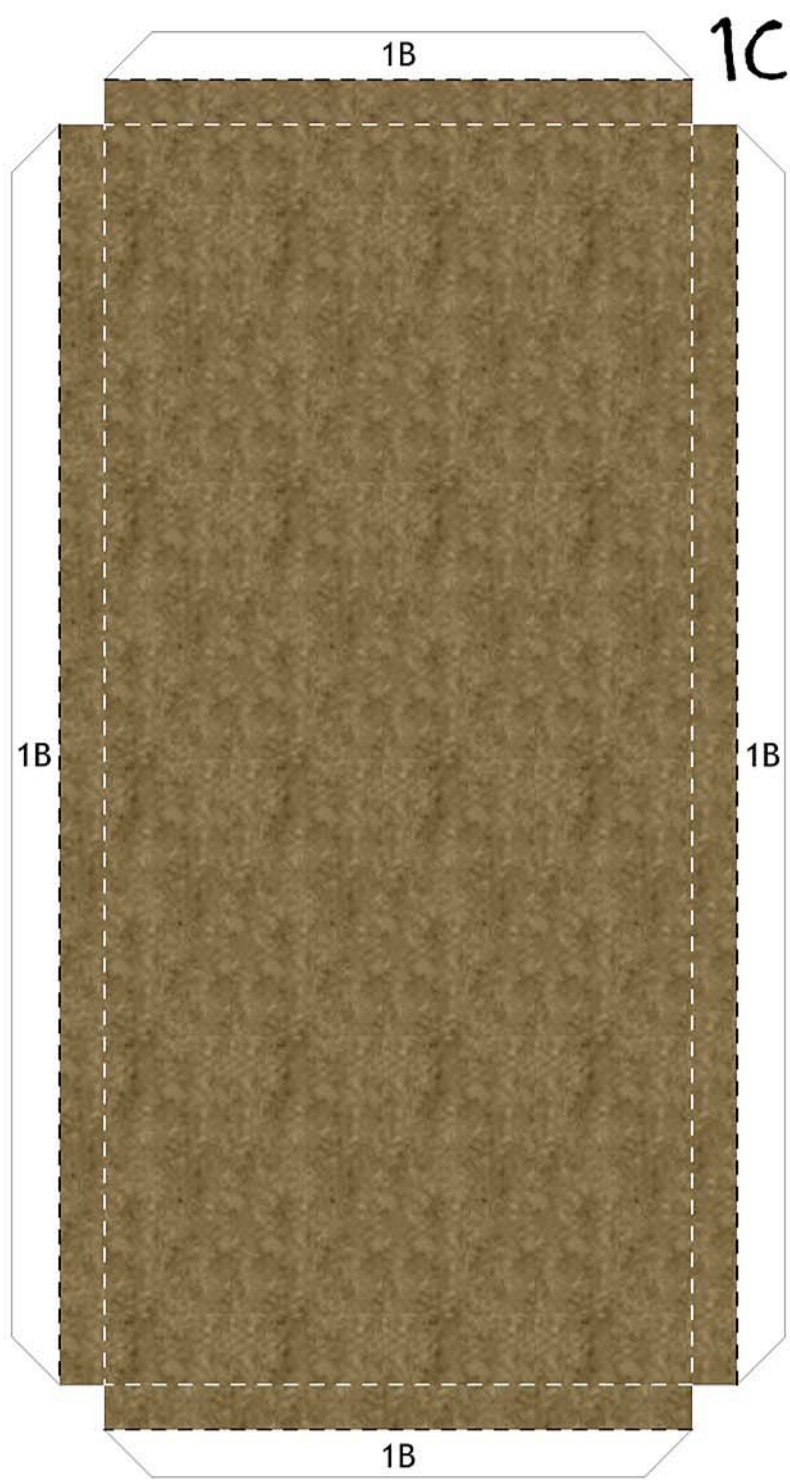
4A



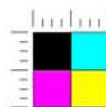
1B

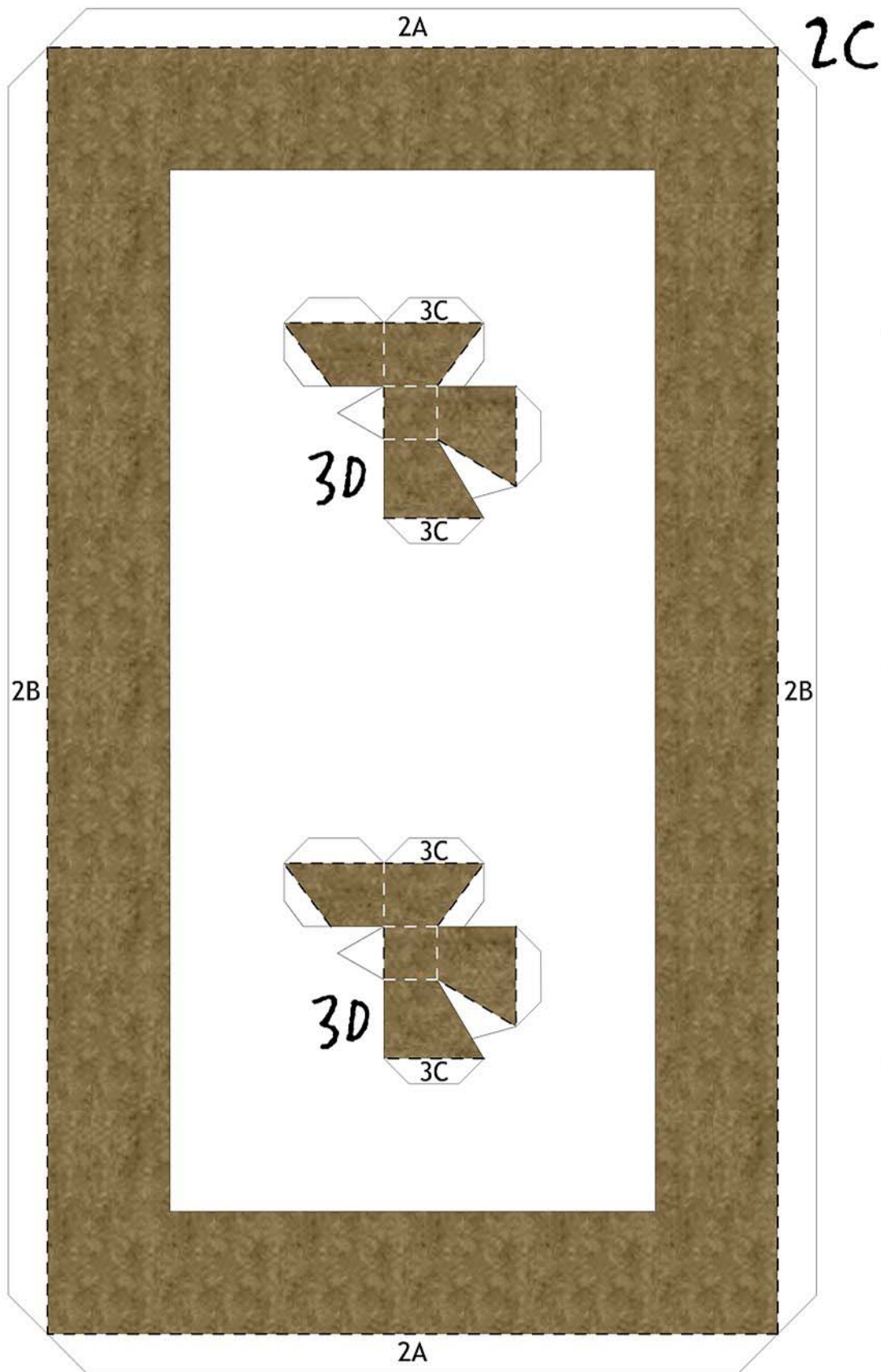
2B



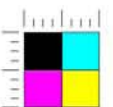


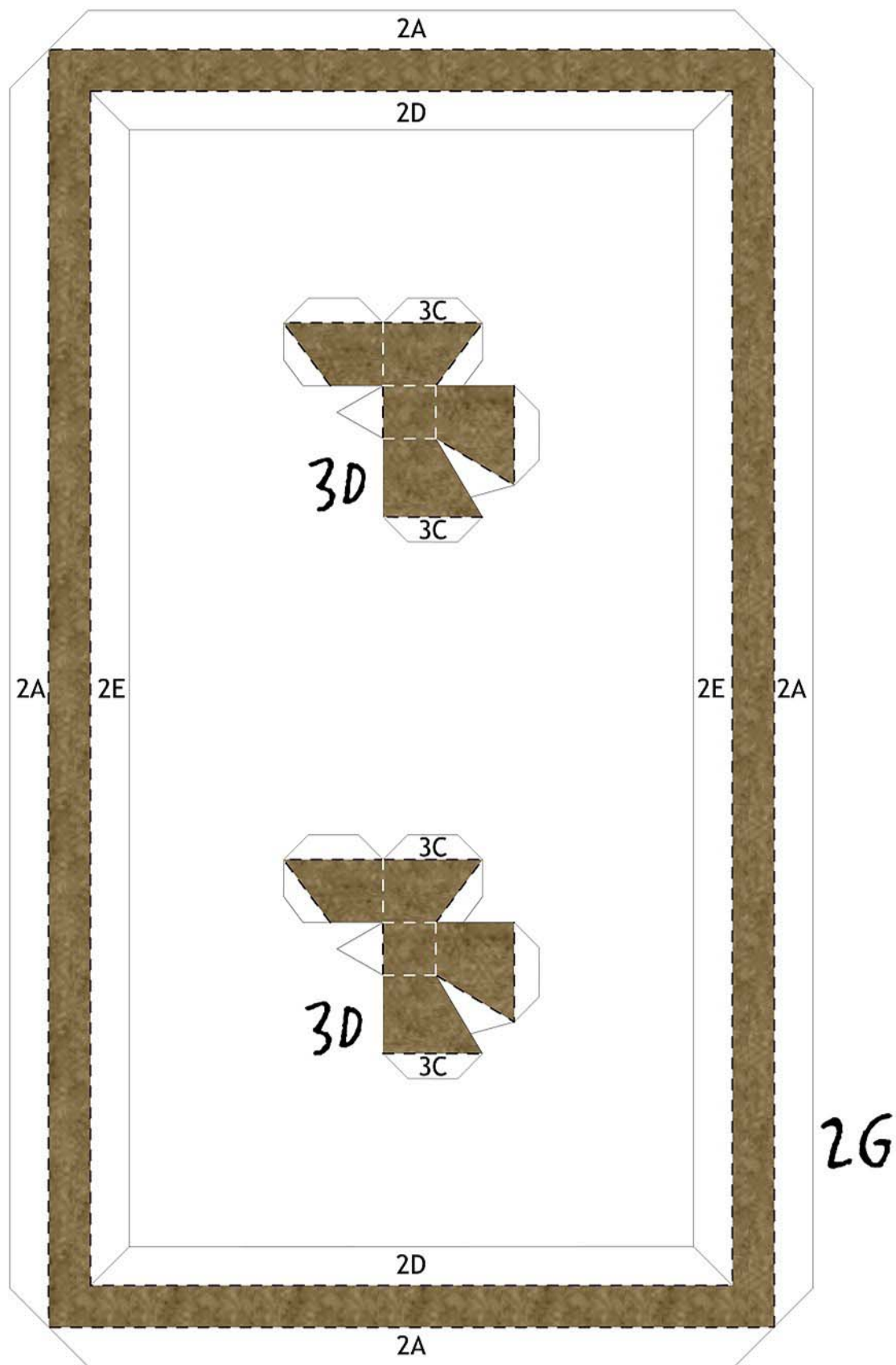
2B

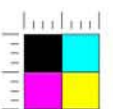
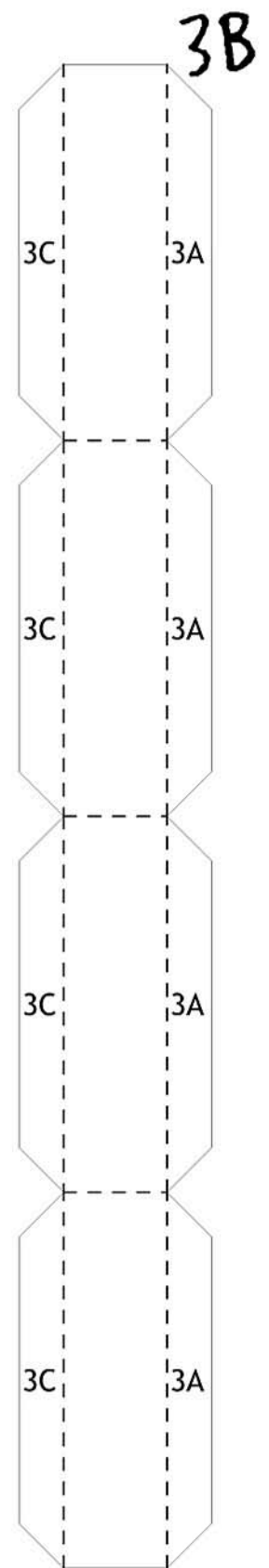
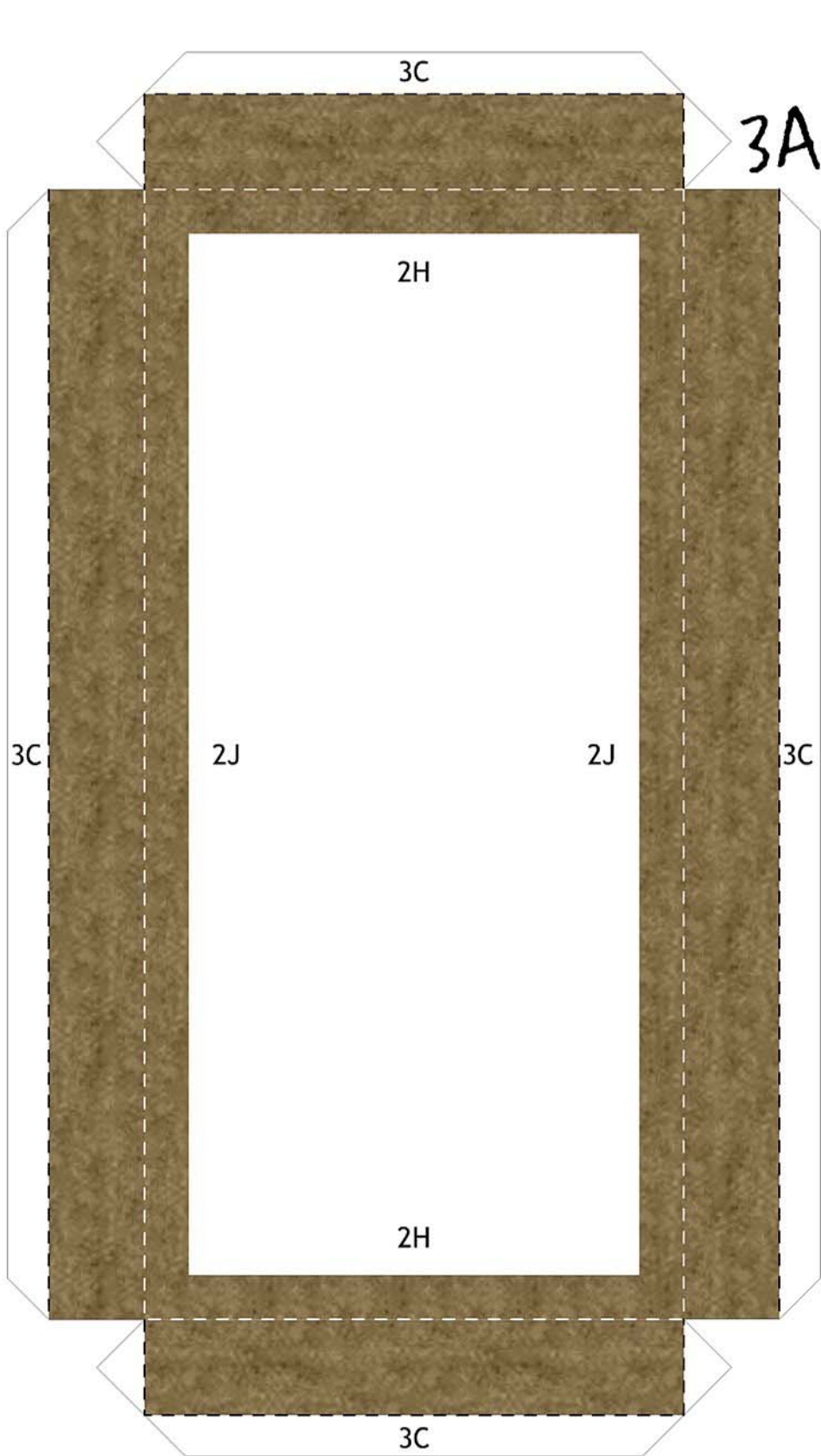




2A



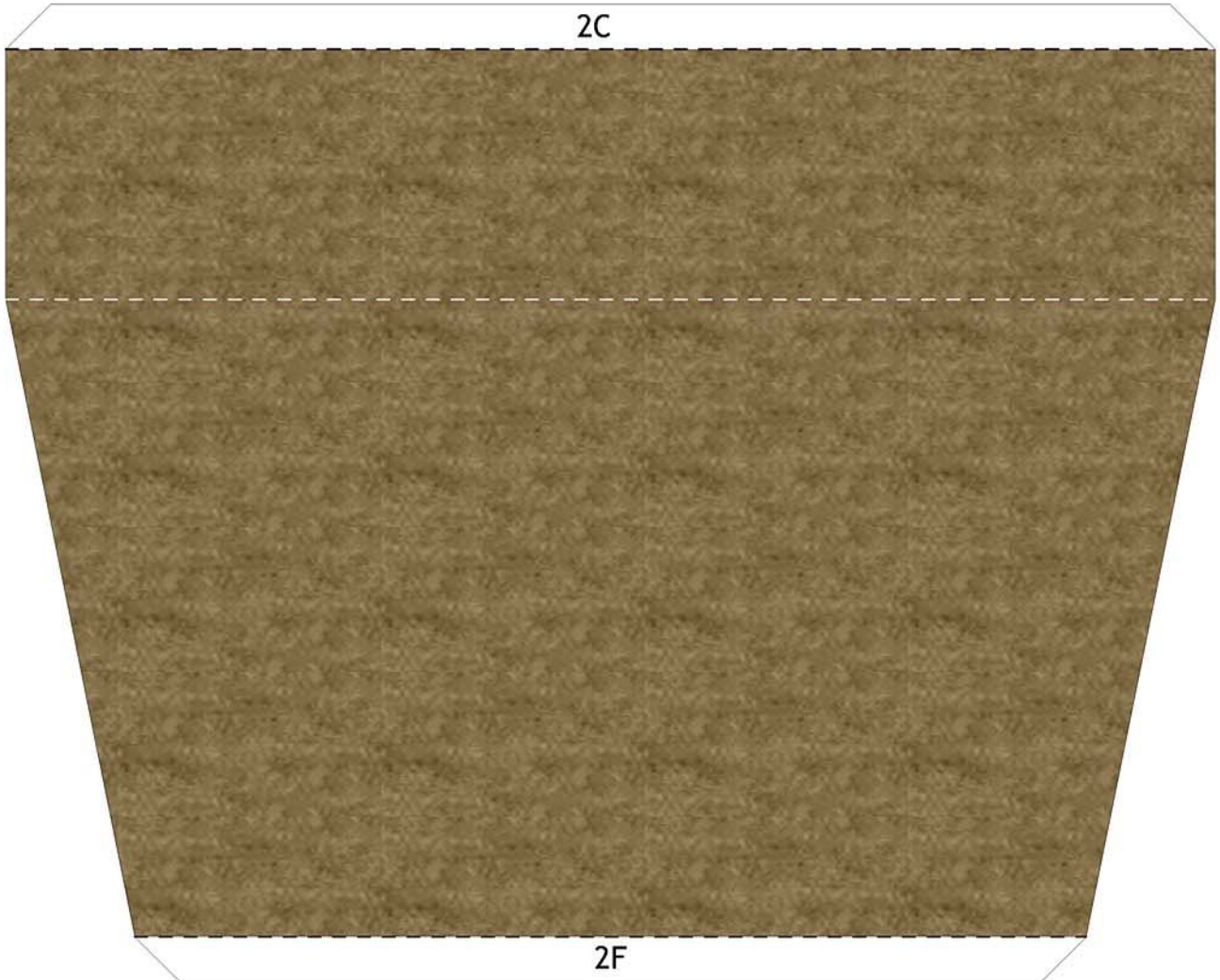




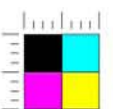
Print this page twice (🖨️x2)

2E

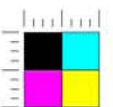
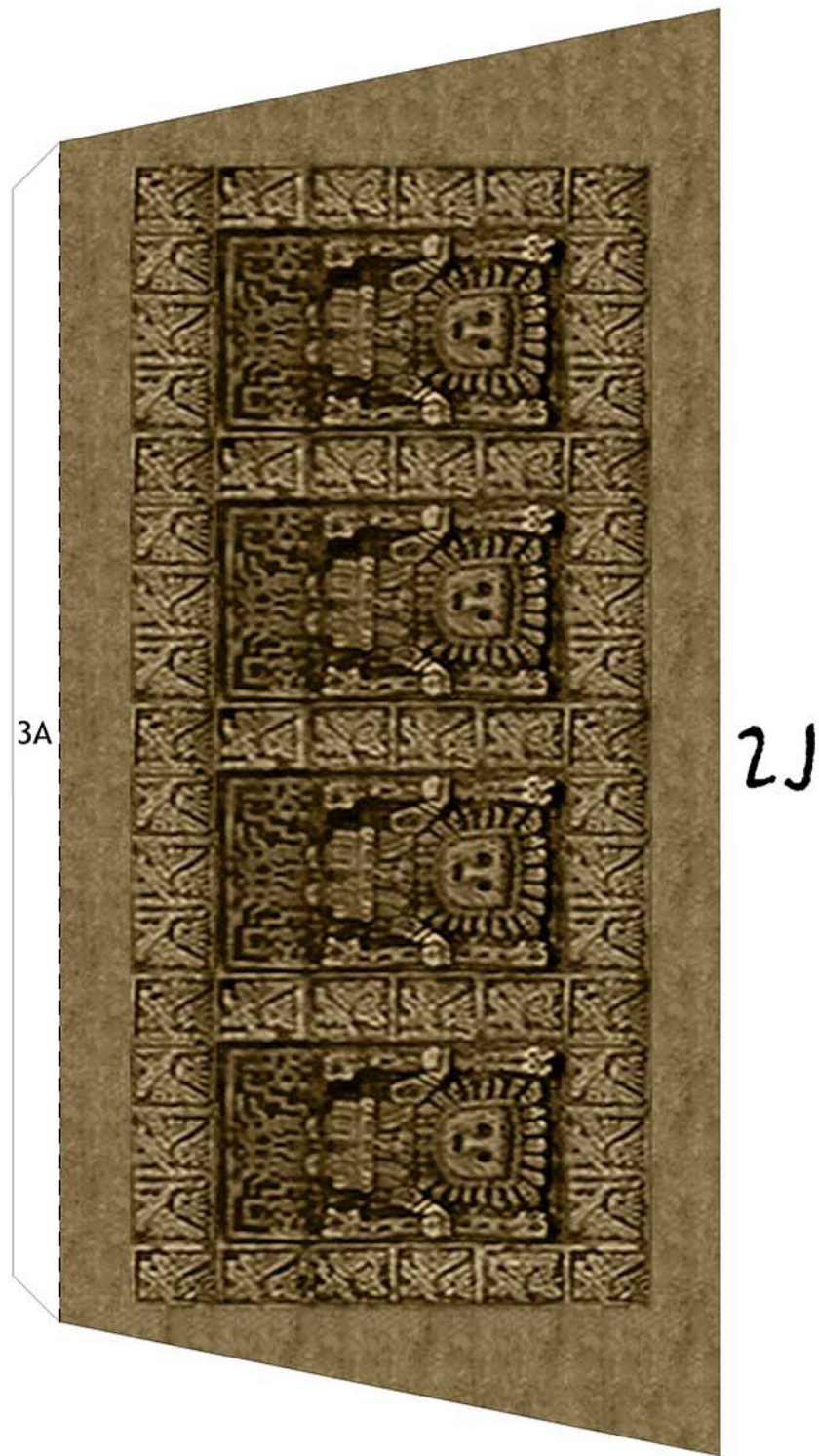
2C

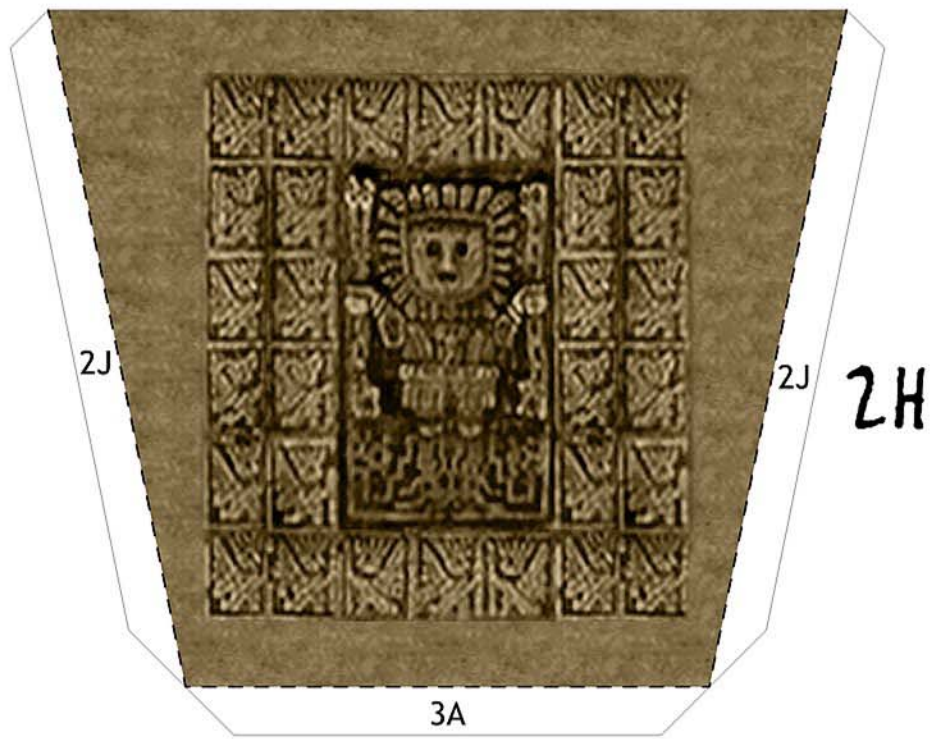


2F



Print this page twice (🖨️x2)





Print this page twice (🖨️x2)

